

Cymbeline

*by William Shakespeare
Directed by Fred Sullivan, Jr.*

**JULY 17-AUGUST 4, 2019
FREE ON BOSTON COMMON**

SUGGESTED DONATION: \$20

COMMSHAKES.ORG •    • #SHAKESPEAREONTHECOMMON



COMMONWEALTH
SHAKESPEARE
COMPANY

Inside ^{the} Actors Studio

COMING THIS FALL
ONLY ON OVATION TV



THE POWER OF ART

OvationTV.com



FROM THE DIRECTOR

Dear Friends,

Welcome to Free Shakespeare on the Common and this evening's performance of *Cymbeline*! After appearing with CSC in over a dozen productions on the Boston Common, I am thrilled to be in the director's chair for a play that I finally get to check off my Shakespearean "bucket list." Having directed and acted in over fifty productions of twenty eight of the Bard's plays, it is a joy to be able to bring this play to the Boston Common this summer which is the first time it has been produced at CSC.



Cymbeline is one of Shakespeare's last plays. The last four plays he wrote are referred to as romances for they are tragicomedies usually set in an epic fantastical fairy tale world. They contain incredibly beautiful poetry by a playwright who had written the world's greatest classical masterpieces and also fabulous dense plots of forgiveness and redemption. Perhaps what is most exciting is sharing a great play that very few people have seen with thousands at each performance in a gorgeous historical location.

24 years ago, Steven Maler founded Commonwealth Shakespeare Company with the passionate belief that everyone deserves and should have access to the arts. Free Shakespeare on the Common is presented free of charge and welcomes upwards of 50,000 people to the Boston Common each summer. That the production is free to all is a profound civil service to the community. Professionally produced live theatre is so vitally important to a city and its citizens and Steve's artistic vision is one not only of excellence but of service.

We thank you for choosing to spend your time with us on the Common and encourage you to help support our mission with a contribution of \$20 or more to help us continue to perform Shakespeare as it was meant to be — live, outdoors, and for the people. CSC is a non-profit theater company and our production of *Cymbeline* costs over \$500,000 to present. In order to sustain our high-quality productions that are free to the public, we depend on the generosity of our amazing donors, supporters, and audiences.

Having grown up in Chelsea, I truly love Boston and I'm so humbled and grateful to be part of Free Shakespeare on the Common. I am proud to work with this team of actors, designers, and crew members. I hope you enjoy this beautiful, hilarious, meaningful, deeply felt, and exciting production. This one is not to be missed and we are so glad you are here!

All the best,

Fred Sullivan, Jr.

Fred Sullivan, Jr.
Director



NOW ON SALE!

Disney PRESENTS

THE LION KING

THE WORLD'S #1 MUSICAL

OCTOBER 3 – 27

CITIZENS BANK OPERA HOUSE

BroadwayInBoston.com | 866-870-2717

Groups (10+): 617-482-8616



The 24th Season of Free Shakespeare on the Common
Commonwealth Shakespeare Company's Production of:

Cymbeline

by William Shakespeare
*Directed by Fred Sullivan, Jr ****

Lead sponsor:



July 17-August 4, 2019 | Tues-Sat @8pm | Sun @7pm | Matinee: August 3 @ 3pm

Scenic Design	Jessica Hill & Patrick Lynch**
Costume Design	Elisabetta Polito**
Lighting Design	Eric Southern**
Sound Design	Peter Hurowitz
Composer/ Music Director	Milly Massey
Fight Director	Nile Hawver
Production Manager	Renee E. Yancey
Production Stage Manager	Kevin Schagle*

* Member of Actors' Equity Association, the Union of Professional Actors and Stage Managers in the United States

** Represented by United Scenic Artists, Local USA 829 of the IATSE

*** Stage Directors and Choreographers Society



COMMONWEALTH
SHAKESPEARE
COMPANY

Steven Maler, Founding Artistic Director
Abigail Rollins, Managing Director



**Xfinity is providing a FREE WiFi hotspot here on the Common.
Select xfinitywifi to log on throughout the show.**



This program is supported in part by a grant from the Boston Cultural Council, a local agency which is funded by the Massachusetts Cultural Council, administered by the Mayor's Office of Arts, Tourism, and Special Events.

Support Free Shakespeare! Donate \$20: commshakes.org 5

SYNOPSIS: CYMBELINE

Once upon a time, Cymbeline, King of Britain, a widower with three children, remarries a widow with a grown son named Cloten. The new Queen wants her son to marry Princess Imogen, Cymbeline's sole heir, since his two sons by his first wife were kidnapped 20 years ago. The trouble is, Imogen does not love the bullying, oafish Cloten. She has married Cymbeline's ward, the poor, orphaned Posthumus Leonatus. Furious at this marriage, Cymbeline banishes Posthumus.

The Queen receives a box of potions from her henchman, Doctor Cornelius, containing what she thinks is a deadly poison. Cornelius, mistrustful of the wicked queen, has given her a drug that makes the body appear lifeless for a time. The Queen gives the box to Pisanio, Posthumus' servant, telling him the potion is a cure-all, hoping both he and his young master will drink it and die – leaving Cloten to marry Imogen.

Arriving in Italy, Posthumus is overheard bragging about his beautiful young wife's fidelity by the roguish Iachimo. They wager that Iachimo cannot prove Imogen to be unfaithful. Iachimo travels to Cymbeline's court to seduce Imogen, but when she rejects him, he hides in a trunk and steals her bracelet as proof he was with her. Posthumus, in a blind, jealous rage, instructs Pisanio to accompany Imogen to Wales and kill her.

Meanwhile, Caius Lucius, a Roman general arrives in Cymbeline's court to collect a yearly tribute. Cymbeline refuses to pay, beginning a war between Rome and Britain.

Pisanio confesses to Imogen that he has been instructed by her husband to kill her. He suggests that for her safety she disguise as a boy and offer herself as a page to Caius Lucius. Pisanio rushes back to England leaving the potion with Imogen in case she gets seasick or distraught. Imogen happens upon a cave of an old man and his two sons. They take the young, innocent "Fidele" (Imogen's disguised name) into their home.

INTERMISSION

While the family is out hunting, Imogen is heartsick over Posthumus and drinks the potion.

Cloten disguises himself in Posthumus's old clothes so he will not be recognized. He sets off to kill Posthumus and ravage Imogen as revenge.

When the hunters return home, Cloten attacks Guiderius, who beheads Cloten in a savage fight. Then the body of Fidele (Imogen) is found and assumed dead. They decide to bury "Fidele" and the headless Cloten. Imogen wakes up alone next to the decapitated body which is dressed as Posthumus and mourns her young husband. The army of Caius Lucius arrives and adopts "Fidele the Page."

As the war begins, Iachimo and Posthumus are drafted to fight for Rome. The mountaineer family swear to fight for Britain; Posthumus joins their cause and in disguise, wins the battle for Cymbeline and takes Iachimo prisoner. What ensues is the longest scene of confessions, revelations, reunions, grace, and forgiveness Shakespeare ever wrote. It is both moving and magical. All live happily ever after, except Cloten and the Queen.

HAMLET 360 THY FATHER'S SPIRIT



COMMONWEALTH
SHAKESPEARE
COMPANY



Daydream

SENSORIUM

CHRONOTOPE

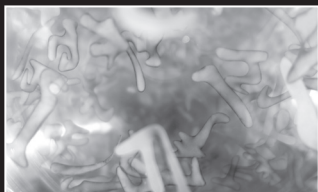
"Although you watch it on a screen, "Hamlet 360" feels in many ways more like theater than cinema." —Elizabeth A. Harris, *The New York Times*

"It felt more as if I'd been catapulted into a movie or a play, or as if I was seeing it in my mind's eye" —Don Aucoin, *The Boston Globe*

In partnership with **WGBH** View it exclusively on the WGBH YouTube channel. The 360 video is best viewed using a VR headset, such as the Google Pixel phone with Google Cardboard or Daydream View.

BABSONARTS

Coming this Fall:



Excerpts Installation by Naoe Suzuki

Artist Talk and Reception:

Thursday, September 12, 5:00 P.M.

Exhibit on View: September 12-November 1

Hollister Gallery

Jamie Kent and Friends Concert

Thursday, September 26, 7:00 P.M.

Carling-Sorenson Theater



BabsonARTS, 231 Forest Street, Wellesley, MA 02457

Events are FREE with registration at babsonarts.org later this summer.   

LOVE SHAKESPEARE?



DRINK SHAKESBEER.

At Shakesbeer, we celebrate the works of Shakespeare through the art of craft beer.

Available anywhere you can find great craft beer.

**Never too bitter, never too hoppy -
Simply *brewed as you like it.***

www.drinkshakesbeer.com

Hingham, Massachusetts



@ShakesbeerBeverages



@ShakesbeerBeverages



@RealShakesbeer



ABOUT COMMONWEALTH SHAKESPEARE COMPANY

Commonwealth Shakespeare Company (CSC) is dedicated to artistic excellence, accessibility, and education. We present plays of the highest artistic caliber that celebrate ideas and language to create dialogue around compelling issues of our time. We eliminate barriers – physical, economic, and cultural – to bring live theater to audiences throughout Greater Boston. We cultivate in young artists the value of community engagement, and collaborate with educators to bring literature to life in the classroom. In 2013, CSC became the Theatre-in-Residence at Babson College in Wellesley, Massachusetts, expanding its offerings beyond the Boston Common.

MAKE A MOBILE DONATION TO CSC!



COMMONWEALTH
SHAKESPEARE
COMPANY

Enter **444999**
as phone number

Text **“SHAKES”**
(not case sensitive)

Follow the link to donate with a credit card from your phone.

HELP KEEP SHAKESPEARE FREE FOR ALL!

It costs over **\$500,000** to bring **FREE** Shakespeare to the Common and the majority of our donations come from individuals like you!

With a gift of \$20 or more, you can help us continue to perform Shakespeare as it was meant to be: live, outdoors, and accessible to all!

IT'S EASY TO DONATE!

TEXT US!

- Text “**SHAKES**” to **444999** to receive a link to a mobile friendly donation form.

(Note: this gift will not appear on your mobile phone bill. You must enter your credit card information into the secure form from the link on your mobile device).

ON SITE:

- Pass cash and checks to one of our Apprentice Ambassadors before the show begins.
- Stop by our info tent to drop a donation into our donation box at any point.
- Want to use a credit card? Use the “text to give” instructions above or make a donation on one of our iPads with the help of one of our Apprentice Ambassadors – or at the info tent.
- Make an easy \$10 donation by “dipping” your credit card in our DipJar at the info tent.

ONLINE:

- Visit commshakes.org/ways-to-give

MAIL:

- Send a check or remittance envelope found in your playbill to:

231 Forest Street
Babson Park, MA 02457

CAST

BRITAIN

<i>King Cymbeline</i>	Tony Estrella*
<i>Princess Imogen</i>	Nora Eschenheimer
<i>Queen, step-mother to Imogen</i>	Jeanine Kane*
<i>Cloten, her son</i>	Kelby T. Akin*
<i>Posthumus Leonatus, married to Imogen</i>	Daniel Duque-Estrada*
<i>Pisanio, his servant</i>	Remo Airaldi*
<i>Helen, lady attending Imogen</i>	Erika Anclade
<i>Cornelius, a Doctor</i>	Mihir Kumar
<i>3 Lords attending on Cloten</i>	Nigel Richards, John Hardin, Chet R. Davino
<i>Officers/Guards</i>	Rodney Witherspoon II, Zachary Gibb, John Hardin, Brian Pollock
<i>Ladies of Court, Serving Maids</i>	Ashley Knaack, Sarah Vasilevsky

ITALY

<i>Philario, a friend of Posthumus' father</i>	Richard Noble
<i>Iachimo, a rogue</i>	Jesse Hinson*
<i>Caius Lucius, General of Roman Army</i>	Gunnar Manchester*
<i>Roman Captain</i>	Zachary Gibb
<i>Philharmonius, a Soothsayer</i>	Gregory Hermann
<i>A Frenchman</i>	Brian Pollock

WALES

<i>Belarius</i>	Tom Gleadow*
<i>Guiderius</i>	Jonathan Higginbotham*
<i>Arviragus</i>	Michael Underhill

APPARITIONS

<i>Ghost of Sicilius Leonatus, Father to Postumus</i>	Armand Lane
<i>Ghost of Mother</i>	Sarah Vasilevsky
<i>Ghosts of Brothers</i>	Chet R. Davino, Gregory Hermann
<i>Jupiter</i>	Jesse Hinson*

<i>Centurions/Soldiers/Musicians/Animals/Mythological Creatures & Fairies/ Attendants/Messengers/ Bar inhabitants/gods</i>	Ensemble
--	----------

* Member of Actors' Equity Association, the Union of Professional Actors and Stage Managers in the United States

WHO'S WHO: CAST



Kelby T. Akin*
(Cloten) makes his fifth appearance at CSC. Other area credits include *Death of a Salesman* (IRNE award winner, Best Supporting Actor), *33 Variations*, *The Understudy* and *Cat on a Hot Tin Roof* (Lyric Stage). *Romeo and Juliet*, *Much Ado About Nothing*, *Hamlet*, *Paul* and *The Glass Menagerie* (Sandra-Feinstein Gamm Theatre). *Richard III*, *All The King's Men* and *A Christmas Carol* (Trinity Rep). Kelby has also enjoyed featured roles in "Patriots Day", "Detroit", "The Heat" and several other major releases.



Remo Airaldi*
(Pisanio) has appeared with CSC in *Richard III*, *Love's Labour's Lost*, *Twelfth Night*,

The Two Gentleman of Verona, *Coriolanus*, *All's Well That Ends Well*, *The Comedy of Errors*, and *The Taming of the Shrew*. He has appeared in over sixty productions at the American Repertory Theater, including *The Night of the Iguana*, *Oliver Twist* (also at Theatre for a New Audience and Berkeley Repertory Theatre), and *Island of Slaves* (IRNE Award—Outstanding Actor). Other credits: *Shakespeare in Love* (Speakeasy Stage), *The Little Foxes*, *My Fair Lady*, *Sweeney Todd* and *Gypsy* (Lyric Stage), *Exposed* (Boston

Playwrights' Theater), *Mistero Buffo* (The Poets' Theatre), *Frankenstein* and *The Hound of the Baskervilles* (Central Square Theater), *The King of Second Avenue* (New Repertory Theatre) and productions at Hartford Stage, La Jolla Playhouse, Geffen Playhouse, Cirque du Soleil, American Conservatory Theater, Walnut Street Theatre, Prince Music Theater, Actors' Theatre of Louisville. He teaches acting and public speaking at Harvard University.



Daniel Duque-Estrada*
(Posthumus Leonatus) is thrilled to be making his CSC debut. He is currently

a Member of Trinity Rep's resident acting company and has been a resident actor at the Dallas Theater Center as well as two seasons at the Oregon Shakespeare Festival. He holds an MFA in acting from the Brown/Trinity MFA acting program.



Nora Eschenheimer
(Princess Imogen) is thrilled to be making her CSC debut. Her recent credits include *Rosalind* in *As You Like it*, *Perdita* in *The Winter's Tale*, *Gwendolen Fairfax* in *The Importance of Being Earnest* at the Gamm Theatre, and *Rachel Brown* in *Inherit the Wind* at the Ocean State Theatre Company. She is the co-founder of

WHO'S WHO: CAST

the Tiny Traveling Theatre (as recently seen on HGTV and DIY Network) and has spent the last year traveling the country to raise awareness of the importance of accessibility to the performing arts. TinyTravelingTheatre.org



Tony Estrella* (*King Cymbeline*) has extensive experience in Shakespeare as both an actor and director. Favorite roles

include Hamlet, Macbeth, Henry V, Benedick in *Much Ado About Nothing* and Leontes in *The Winter's Tale*. His film/TV work includes Martin Scorsese's "The Departed", Kenneth Lonergan's "Manchester by The Sea" and Greta Gerwig's upcoming "Little Women". He is also the author of new versions of Ibsen's *A Doll's House* and *Hedda Gabler* as well as works by Friedrich Schiller and the world premiere adaptation of Barry Unsworth's *Morality Play*. Since 2002, Tony has been Artistic Director of the Sandra Feinstein-Gamm Theatre and has been on the faculty of the University of Rhode Island since 1997 where he teaches Shakespeare in the BFA acting program.



Tom Gleadow* (*Belarius*) is thrilled to be back at CSC having been involved with their productions of *A Midsummer Night's*

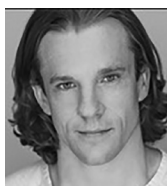
Dream and *As You Like It*. He has performed throughout New England for close to thirty years in such productions as *Much Ado About Nothing*, *Hamlet*, *Awake and Sing*, *Arcadia* and *A Doll's House* at The Gamm Theatre, *Oklahoma*, *Oliver*, and *A Christmas Carol*, at Trinity Rep, *Anything Goes* and *Young Frankenstein* at North Shore Music Theatre and *She Loves Me* at The Greater Boston Stage Company. Tom is a full time faculty at Salve Regina University.



Jonathan Higginbotham* (*Guiderius/Fight Captain*) credits include: *Cymbeline* (Yale Repertory

Theater), *Richard II* (Lincoln Center Theater Director's Lab), *Peer Gynt From Kosovo* (Lincoln Center Theater Director's Lab), *Twelfth Night* (Elm Shakespeare Company), *Not Medea* (Art House Productions), and *The Feels...KMS* (New Ohio Theater). Jonathan received his MFA from Yale School of Drama where he was seen in *The Three Sisters*, *Ubu Roi*, *Macbeth*, *A Midsummer Night's Dream*, *The Oresteia*, and *In The Red and Brown Water* (Yale Cabaret). Jonathan studied at the British American Drama Academy in Oxford and holds a BA in theater from Hamilton College.

WHO'S WHO: CAST



Jesse Hinson*

(Iachimo) is excited to be making his CSC debut. Merrimack Repertory Theatre: *Christmas*

at Pemberly. Speakeasy Stage Company: *Shakespeare in Love.* Central Square Theatre: *Photograph 51.* Actors' Shakespeare Project: *Exit the King, The Tempest, The Winter's Tale, King Henry VI Part 2, The Comedy of Errors, As You Like It, Pericles, Twelfth Night, Antony and Cleopatra.* New Repertory Theater: *The Whipping Man, Holiday Memories.* Greater Boston Stage Company: *Seminar, Miracle on 34th Street.* The Sandra Feinstein-Gamm Theater: *As You Like It, Arcadia, The Winter's Tale, Morality Play.* Berkshire Theatre Group: *The Puppetmaster of Lodz, Moonchildren, Macbeth, The Einstein Project, A Christmas Carol.* Georgia Shakespeare: *Twelfth Night, Romeo and Juliet, Macbeth, Much Ado About Nothing, Coriolanus, Cymbeline.* Jesse earned an MFA in acting at Brandeis University and a BA in theatre at Oglethorpe University in Atlanta, GA. He is Associate Teaching Professor at Northeastern University.



Jeanine Kane*

(Queen) last appeared with CSC as Regan in *King Lear.* A resident actor at the Gamm

Theatre, some favorite roles have

been Hannah in *The Night of the Iguana*, Jaques in *As You Like It*, Elizabeth in *King Elizabeth*, Paulina in *The Winter's Tale*, Lady Macbeth in *Macbeth*, Margaret in *Good People*, Maureen in *The Beauty Queen of Leenane*, and Nora in *A Doll's House.* Other regional theatres include Trinity Rep Company and Boston Playwrights' Theatre. She teaches acting and speech classes at Massasoit Community College and speech communications at Emerson College.



Gunnar

Manchester* (Caius Lucius) is delighted

to be making his CSC debut. Brown/Trinity: John

Buchanan Jr. in *Summer and Smoke.* Sandra Feinstein-Gamm Theater: *As You Like It, Uncle Vanya, Arcadia.* Actor's Shakespeare Project: *Exit the King.* Wilbury Theatre Group: *Church, Spring Awakening, Straight White Men.* Williamstown Theater Festival: *Late Night Cabaret, 27 Ways I Didn't Say Hi to Laurence Fishburne.* Epic Theatre Co: *Red Speedo.* Gunnar is a graduate of Bates College, and a rising second year in the Brown/Trinity Rep MFA program.

WHO'S WHO: CAST



Richard Noble
(Philario) lives and works by day as a rare book librarian in Providence, where he has also appeared

at the Gamm Theatre (going back to its days as Alias Stage), Perishable Theatre, the Brown Playwrights' Festival, and lately as Galileo in Burbage Theatre's production of *Brecht's Galileo*. In 2018 he made his Shakespeare on the Common debut as Edward IV in *Richard III*. In earlier days he appeared in a couple of dozen productions at Wesleyan University, was a member of the Dartmouth Summer Rep, and frequently appeared at the Parish Players in Thetford, Vermont.



Nigel Richards
(Lord) is thrilled to be making his CSC debut. He has done productions with Trinity Repertory

Company. The Wilbury Theater

Group: *Passing Strange*, *Spring Awakening*. Peregrine Theater Ensemble: *Hair*. Nigel is a rising junior at Boston Conservatory at Berklee in the BFA Musical Theater program.



Rodney Witherspoon III
(Officer/ Guard) is a New England based actor and writer. A Los Angeles native,

he graduated from the University of California, Berkeley and is an MFA candidate at the Brown University/ Trinity Repertory Company MFA program in Acting. He is also a teaching artist at Trinity Rep's Young Actors Summer Institute (YASI). He has worked with Berkeley Repertory Theatre (CA), Wilbury Theatre Group, Mixed Magic Theater (RI), ART Station, Vanguard Repertory Company, Marietta's New Theatre in the Square, the Sanford Performing Arts Center, and Atlanta Actors Equity (GA).



Actors' Equity Association (AEA) was founded in 1913 as the first of the American actor unions. Equity's mission is to advance, promote and foster the art of live theatre as an essential component of our society. Today, Equity represents more than 40,000 actors, singers, dancers and stage managers working in hundreds of theatres across the United States. Equity members are dedicated to working in the theatre as a profession, upholding the highest artistic standards.

Equity negotiates wages and working conditions and provides a wide range of benefits including health and pension plans for its members. Through its agreement with Equity, this theatre has committed to the fair treatment of the actors and stage managers employed in this production.

AEA is a member of the AFL-CIO and is affiliated with FIA, an international organization of performing arts unions. For more information, visit www.actorsequity.org.

WHO'S WHO: CSC2

CSC2 is a company of actors that works with Commonwealth Shakespeare Company on an extended basis. The ensemble is built of non-equity, early-career actors working both as a cohort, learning from a diverse cast of their peers, and also alongside CSC's professional company in a variety of productions, including their own production of *Romeo & Juliet* presented in Spring 2019 at Babson College's Sorenson Center for the Arts, and this production of *Cymbeline*.



Erika Anclade (Helen)

A recent grad of Yale University. She played the Mistress in *Passion* at the Yale School of Drama and Lady Macbeth in her

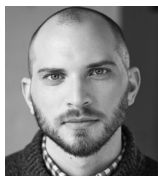
senior thesis production of *Macbeth*. Her NY credits include the Off-Broadway revival of *Fiorello!* (Classic Stage Company) and a reading of *Better Than Dreaming*, a new musical, at the York Theatre Company.



Chet R. Davino (Lord/Ghost of Brother)

Since graduating Dean College's School of the Arts in 2014, he has been working as

an actor and fight choreographer for community and professional theaters around the northeast. His recent work includes performing as Melchior (*Spring Awakening*, The Warner Theater), Prince Eric (*The Little Mermaid*, Company Theater), & JD (*Heathers*, Enter Stage Left).



Zachary Gibb (Officer/Guard/Roman Captain)

is an actor from Providence, Rhode Island. Previous productions include

Inherit the Wind at the Ocean State Theatre Company as well as many shows at Swamp Meadow Community Theatre. He has trained at The Gamm

Theatre, and has spent the last six years working as a software engineer.



John Hardin

(Lord) Previous Shakespeare credits include the title role in *Hamlet* (Adirondack Shakespeare Company),

Ferdinand in *The Tempest* (Hudson Valley Shakespeare Festival), and The Porter in *Macbeth* (Shakespeare on the Sound). In addition to his acting work, John is a chess teacher and coach with clients all over the country. Training: Stella Adler Studio (NYU Tisch)



Gregory Hermann (Philharmonius)

is a graduate of the Experimental Theatre Wing and Classical Studio at New York University.



Ashley Knaack (Lady of Court)

is a recent BFA Musical Theatre graduate of Shenandoah Conservatory. Her conservatory credits

include Hecuba in *The Trojan Women*, Fraulein Schneider in *Cabaret*, Victoria Woodhull in *Onward Victoria*, and Elizabeth Welsh in *Blue Stockings*. Professionally, Ashley has appeared in *My Fair Lady*, *Sweeney Todd*, and *The Pirates of Penzance* with Shenandoah Summer Music Theatre and in 5-Star

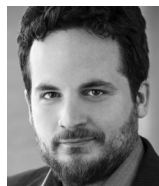
WHO'S WHO: CSC2

Theatricals' *Beauty and the Beast*, and as Mrs. Spencer in 4-Leaf Theatricals' *Merrily We Roll Along*.



Mihir Kumar (Cornelius) is making his debut with CSC. Recent credits include: Regional: Shakespeare Theatre Company: *Richard III*. International:

The Australian Shakespeare Company (Melbourne): *The Comedy of Errors*. Training: UCLA: BA in Communication Studies & Theatre; American Conservatory Theater; National Institute of Dramatic Art (NIDA). Web: Instagram: mihir.is.here.



Armand Lane (Ghost of Sicilius Leonatus) is classically trained in both stage and voice. He has worked in productions ranging from the classics to

musicals in off-Broadway houses, regional theaters, and even a fort from time to time. Recent credits include *Measure for Measure* (Angelo), *Silence! The Musical* (Crawford/Papa Shtarling), and *King Lear* (Cornwall). @armand.lane



Brian Pollock (Frenchman) is an actor-director, clown teacher, and resident actor at the Flea Theater in NYC. Brian is thrilled to return to CSC since

his Apprenticeship in 2013. NYC: *Not My Monster*, *Serials* (Flea), *The Witch of St. Elmora Street* (Wolfpack Theatrics). CSC: *The Two Gentlemen of Verona*, *Cymbeline*. Italy: *The Iliad*, *Captain Gloriosus* (Continuum Company). Film: "At the End of the EPA" (Musical Short, Hackstage). Brian received a BFA in Drama at NYU Tisch.

MODERN LUXURY

BOSTON COMMON

the rising
LILY JAMES
As English Rose in Full Bloom

Summer Sparkle
2017
SNOWSTOPPERS

Surreal Estate!
3 MANHATTANS, OVER THE TOP LISTINGS, HOT NEIGHBORHOODS & MORE

1/18
RISING STAR ALIES BOUCE, SEAFORD GEM & JAMES HOT SPOTS!

STYLING: JESSICA BROWN

MODERN LUXURY

BOSTON COMMON

@bostoncommag

MODERN LUXURY

Interiors

BOSTON

@mlinteriorsboston

MODERN LUXURY

WEDDINGS

BOSTON

@mlweddingsboston

FOR ADVERTISING INQUIRIES

PLEASE CONTACT
GROUP PUBLISHER

CARIN KEANE

CKEANE@MODERNLUXURY.COM

WHO'S WHO: CSC2



Michael Underhill
(*Arviragus*) is thrilled to be returning to CSC. Previous CSC Credits include: *Richard III* (Richmond), *Macbeth*

(Duncan/Macduff), *Two Gentlemen of Verona* (u/s Proteus) and *Othello* (Soldier 1/ Officer 2). His recent credits include *Man in the Ring* (Huntington Theatre Company), Watson in *Photograph 51* (Central Square Theater), Joseph Surface in *School for Scandal* (Actors' Shakespeare Project), Actor #1 in *The Hotel Nephenthe* (Brownbox Theatre Project), as well as productions with imaginary beasts, Happy Medium Theatre, Greater Boston Stage Company, Whistler in The Dark, Maiden Phoenix, Bad Habit Productions, Theatre on Fire

and Apollinaire Theatre Company. He graduated Northeastern University (BA in Theatre – Performance).
www.michaeljamesunderhill.com
[@michaeljamesunderhill](https://twitter.com/michaeljamesunderhill)



Sarah Vasilevsky
(*Lady of Court/Ghost of Mother*) Recent favorite credits include; *Measure for Measure* (Isabella; CSC Apprentice

Program), *Romeo & Juliet* (Benvolio, Lady Capulet, Shakespeare Now!), and *A Midsummer Night's Dream* (Helena, Titania, Shakespeare Now!). Sarah has recently graduated from Suffolk University where she studied Theatre, with a focus in Acting. SarahVasilevsky.org



Professional Backyard Grilling

Proud sponsor of Commonwealth Shakespeare Company

Join us after the show for dessert and cocktails

Just one block from the Common

2 West st.

Corner of West & Washington

617 670-0320

Backdeckboston.com

facebook.com/backdeckboston



Classic Strawberry Shortcake



WiFi that keeps up with the whole family.

Xfinity xFi gives you the fastest speeds and the best in-home WiFi experience. See who's online, set curfews and pause your WiFi to bring the family together. Xfinity xFi puts you in control. Now that's **simple, easy, awesome.**

Go to **xfinity.com**, call **1-800-xfinity** or visit an **Xfinity Store** today.



Restrictions apply. Not available in all areas. Actual speeds vary and are not guaranteed. Xfinity xFi is available to Xfinity Internet service customers with a compatible Xfinity Gateway. Ability to pause limited to home WiFi network. Does not apply to Xfinity WiFi hotspots. Call for restrictions and complete details. NPA224259-0005

CSC APPRENTICE PROGRAM

The CSC Apprentice Program is an intensive summer training program for young professionals who are actively pursuing a career in theatre. Classes include voice and text, as well as monologue coaching, several masterclasses, and other activities. Besides invaluable training, CSC offers a unique opportunity to work alongside theatre professionals on a truly massive scale. Our summer programming reaches over 50,000 audience members every year, and our Apprentices are an integral part of each successful season, as staff, company representatives, and performers.

Apprentice Performances

These productions offer audiences a chance to come celebrate the work of our Apprentices and to see more Shakespeare! All performances are FREE. Space is limited; register online at commshakes.org/apprentice-program. All Performances at: Plaza Theater at Boston Center for the Arts. 539 Tremont Street, Boston MA

All's Well That Ends Well (July 24 & 26 @ 7PM; July 27 @ 1PM)

Directed by Adam Sanders: This is a comedy for our times, fraught with plots, riddles, fools, mistaken identities and characters that, for better or worse, could have come straight from today's headlines.

A Midsummer Night's Dream (July 25 & 27 @ 7PM; July 28 @ 1PM)

Directed by Bryn Boice: Where strict Athenian society meets a Fairyland forest of desire... plus a donkey head, magical love drops, and a wedding feast for all, *A Midsummer Night's Dream* is one of Shakespeare's most fanciful and beloved comedies.

This program is made possible in part by a gift from the Kevin C. Kynock Foundation for the Arts.

BOSTON
CENTER
FOR THE
ARTS



SpeakEasy STAGE COMPANY
STAGING BOSTON PREMIERES

Join us for our 19-20 Season!

CHOIR BOY

ADMISSIONS

PASS OVER

THE CHILDREN

BRIGHT STAR

Subscribe today at SpeakEasyStage.com/Season29

Photo: Amy Jo Jackson in Fun Home (Nile Scott Studios)

2019 CSC APPRENTICE PROGRAM COMPANY

Michelle Atwood
Wellesley College

Fernando Barbosa
Salem State University

Avery Carlson
Oklahoma City University

Alcides Broto Costa Jr.
Drew University

Ali Estey
Hofstra University

Jessica Golden
New York University

Zachariah Angel Gonzalez
Middlesex Community College

Alicia Hartz
New York University

Lea Hawthorne
American Academy of
Dramatic Arts

Kevin Hodgkins
Salem State University

Dakota Judge
Rider University

Rory Lambert-Wright
Suffolk University

Rachel Lepore
New York University

Madelyn Elyse Levine
University of Southern California

Kelsey Malanowski
New York University

Michael Mazzone
Boston College

Jackie McCarthy
Montclair State University

Tanner McCormick
Miami University of Ohio

Melissa Medaglia-Zeller
Boston Conservatory

Molly Minter
Franklin & Marshall College

Sarah Windfeld Nandola
Columbia College Chicago

Kate Piatti
LIU Post

Isabel Pongratz
Wheaton College

Micaleen Rodgers
Suffolk University

Sarah Rose
Smith College

Paige Nina Ruggles
Salem State University

Aria Saltini
Adelphi University

Karen Shantz
Catholic University

Victoria Sprowls
New York University

Grace Tiso
Ithaca College

Samantha Vita
New York University

Jasper Wolf
UMASS Amherst



Between Lenox and Stockbridge
JUNE 15–SEPT 1 TANGLEWOOD.ORG



Support Free Shakespeare! Donate \$20: commshakes.org 21

PRODUCTION STAFF

Renee L. Yancey <i>Production Manager</i>	John Pirroni <i>Wig Design</i>	Casey Dubrowski <i>Sound Intern</i>
Nicole Clark <i>Associate Production Manager</i>	Lauren Reuter <i>Wardrobe Supervisor</i>	Nick Robinette <i>Front of House Manager</i>
Kevin Schlagle* <i>Production Stage Manager</i>	Luisa Earle <i>Assistant Wardrobe Supervisor</i>	Caroline Orlando <i>Assistant Front of House Manager</i>
Brian M. Robillard* <i>Assistant Stage Manager</i>	Theresa Gautreaux, Natasha Mason-Walker, Katy Sheehan <i>Stitchers</i>	Charlotte Palmucci <i>Friends Section House Manager/Audience Services Intern</i>
Talene Pogharian <i>Stage Management Intern</i>	Sasha Tekeian <i>Wardrobe Intern</i>	Batya Reich <i>Volunteer Manager/Audience Services Intern</i>
Natasha Cole <i>Company Manager</i>	Aurelia Lyman <i>Master Electrician</i>	BeNT Productions, Inc <i>Scene Shop</i>
Matt Ciommo <i>Stage Operations Supervisor</i>	Carmen Catherine Alfaro <i>Assistant Master Electrician/ Programmer</i>	High Output, Inc. <i>Lighting Equipment</i>
Thomas H. James <i>Stage Operations Intern</i>	Courtney Arnold <i>Electrics Intern</i>	McCoy Audio Systems <i>Sound Equipment</i>
Eva Shannon-Dabek <i>Stage Operations Intern</i>	Lucas Kery <i>Electrics Intern</i>	United Staging & Rigging, LLC. <i>Staging</i>
Elizabeth Cole Sheehan <i>Costume Shop Supervisor</i>	Brian McCoy <i>Chief Audio Engineer</i>	
Roland Guidry <i>Costume Shop Assistant</i>	Lexie Lankiewicz <i>A2</i>	
Gina Higgins <i>Costume Craftsperson</i>		

ARTISTIC STAFF

Fred Sullivan, Jr.*** <i>Director</i>	Tobi Renaldi <i>Assistant Costume Designer</i>	Peter Hurowitz <i>Sound Design</i>
Jessica Hirschhorn <i>Assistant Director</i>	Eric Southern** <i>Lighting Design</i>	Milly Massey <i>Composer/Music Director</i>
Jessica Hill and Patrick Lynch** <i>Scenic Design</i>	Gifford Williams <i>Associate Lighting Designer</i>	Nile Hawver <i>Fight Director</i>
Elisabetta Polito** <i>Costume Design</i>		Sally Tomasetti <i>Properties Artisan</i>

* Member of Actors' Equity Association, the Union of Professional Actors and Stage Managers in the United States

** Represented by United Scenic Artists, Local USA 829 of the IATSE

*** Stage Directors and Choreographers Society

WHO'S WHO PRODUCTION STAFF

Fred Sullivan, Jr. (Director)** is celebrating 13 seasons with Shakespeare on the Common, first time as Director. He has played the Duke of Buckingham, Capulet, Malvolio, Bottom, Gloucester, Parolles, Menenius, the First Gangster in *Kiss Me, Kate* at the Hatch Shell, and received a Norton Award for Outstanding Actor for his Jaques in *As You Like It*. He spent 35 seasons as a resident actor at Trinity Repertory Company where he appeared in over 130 plays and received Norton and IRNE awards for Outstanding Lead Actor in *Blithe Spirit* and *His Girl Friday*. His Trinity Rep roles included Falstaff, Bottom, Oscar Madison, James Tyrone, Jr, Joe Pitt, Captain Hook, Scrooge and Harold Hill, and he directed Trinity Rep's *A Christmas Carol*, *Shooting Star*, and *Boeing Boeing*. Fred is Resident Director for the Gamm Theatre since 1996 where he has directed 28 productions including *Hamlet* and *Much Ado About Nothing* (each twice), and *Awake at Sing* (Norton Award for Outstanding Production). As an actor at Gamm, he played Donny in *American Buffalo*, Autolycus in *The Winter's Tale* and Mark Rothko in *Red*. Fred has also performed at NJ Shakespeare Festival, Dallas Theatre Center, Berkeley Rep, and Actor's Theatre of Louisville. He teaches acting at Gamm and RISD.

Jessica Hill (Scenic Design) has spent eight seasons as Production Manager for The Gamm Theatre in Pawtucket, RI where she was stage manager for *The Big Meal*, *A Number & Far Away*, and many more productions. She has designed sets for The Gamm's *Escaped Alone/Come & Go*, *Gloria*, *Incognito*, *Arcadia*, *A Streetcar Named Desire*, *Marie Antoinette*, *Blackbird*, *Good People*, *Anne Boleyn*, *1984*, *Sin: A Cardinal Deposed* and *Top Girls*. Jessica has a B.I.A. and a B.F.A. in Interior Architecture from Rhode Island School of Design and has worked as a senior project manager for several award-winning architectural firms. She is owner of Studio Hill, specializing in interior and scenic designs.

Patrick Lynch (Scenic Design)** Previous CSC: *Othello*. Trinity Rep: *A Flea In Her Ear*, *Veronica Meadows*, *Intimate Apparel*, *Boeing Boeing*, *A Christmas Carol* (2010 & 2014), *Shooting Star*. Long Wharf Theatre: *Smart*

People. Gamm: *The Night of The Iguana*, *The Importance Of Being Earnest*, *The Children's Hour*, *American Buffalo*, *The Winter's Tale*, and many more. Brown/Trinity MFA Program: *The Good Person of Szechwan*, *Neva*, *In The Next Room Or The Vibrator Play*, *The Skin Of Our Teeth*, *Middletown*, and many more. Greater Boston Stage Company: *Million Dollar Quartet*. Emerson Stage: *Urinetown* and *Titanic*. Associate/assistant design credits: *Bright Star*, *Wicked*, *A Streetcar Named Desire*, *The Fortress Of Solitude*, *Glengarry Glen Ross*, *The Velocity of Autumn*. Patrick has an M.F.A. from Carnegie-Mellon. patricklynch.carbonmade.com

Elisabetta Polito (Costume Design)**
Recent Costume Design work: *Camelot*, *Peter and the Starcatcher*, *Saturday Night/Sunday Morning*, *City of Angels*, *Into the Woods*, *Water by the Spoonful*, *Stones in His Pockets*, *Time Stands Still*. *Cyrano*, *The Last Schwartz*, *Out of Sterno* (Gloucester Stage Company). *Inherit the Wind* (Ocean State Theater Company). *Dog Fight*, *Big Fish*, *A Future Perfect*, *Necessary Monsters*, *The Color Purple*, *Kurt Vonnegut: Make up your Mind*, *In the Heights*, *Bloody Bloody Andrew Jackson* (SpeakEasy Stage). *Mary Poppins* (Wheelock Family Theater). *A Funny Thing Happened on the Way to the Forum*, *How to Succeed in Business Without Really Trying*, *Addams Family: The Musical*, *Unbleached American*, *Bernarda Alba*, *These Shining Lives*, *The Nutcracker*, *The Rimers of Eldritch* (Stoneham Theater). *The Pajama Game* (Boston Conservatory). *Blood at the Root*, *The Wiz*, *Othello*, *Inner City Blues*, *In the Heights* (Boston Arts Academy). *Marie Antoinette: Color of Flesh* (Providence College). *White Christmas* (The Company Theatre). *L'Elisire d'amore*, *L' Amico Fritz*, *Il Campanello*, *Martha*, *The Bartered Bride*, *The Merry Wives of Windsor* (Boston Midsummer Opera). *The Love of the Nightingale* (Emerson College). *Into the Woods*, *The Importance of Being Earnest*, *The Cherry Orchard*, *Hairspray*, *Metamorphoses*, *Imaginary Invalid* (Concord Academy). *Rent*, *Dr. Faustus* (Suffolk University). *Funnyhouse of a Negro*, *Three Sisters* (Brandeis Theatre Company). 2016 recipient of an Elliot Norton Award.

WHO'S WHO PRODUCTION STAFF

Eric Southern (Lighting Design)** is an OBIE award winning designer for theater, opera, and dance. With CSC: *Richard III* (Irme Nomination), *Love's Labor's Lost*, *Without You*, *Twelfth Night*, *Two Gentleman of Verona*, *Coriolanus*, & *The Last Will*. Other recent work includes Lincoln Center, Playwrights Horizons, BAM, The Public Theater, and The Kennedy Center. He is a frequent collaborator with 600 HIGHWAYMEN, Susan Marshall, Suzanne Bocanegra, and David Lang. Also projects with Carnegie Hall, Atlantic Theater Company, Manhattan Theater Club, The New Group, Williamstown Theater Festival, The Guthrie, Geffen Playhouse, among others. He is an assistant professor at Northwestern University and received his BFA & MFA from NYU Tisch School of the Arts.

Peter Hurowitz (Sound Design) is excited to be working on his first show for CSC. He is the Resident Sound designer and Sound Engineer at Trinity Repertory Company where he is completing his 23rd season. This season he has designed *A Christmas Carol*, *Black Odyssey*, *Macbeth* and *Little Shop of Horrors*.

Milly Massey (Composer/Music Director) Recent credits include: Assistant Director: *The Importance of Being Earnest*, *Arcadia* and *The Winter's Tale*, LeBeau/Martext: *As You Like It*, Nurse/Musical Director: *A Streetcar Named Desire*, Second Nun *The House of Blue Leaves* (Gamm Theatre); Musical Director/Mrs. Blair: *Inherit the Wind* (Ocean State Theatre Company); Viv in *Di and Viv and Rose*, Musical Director: *Futurity*, Assistant Director: *Stupid F*%\$!! Bird*, Co-Musical Director: *This Beautiful City* (Wilbury Group). After 20 years in New York as an advertising executive, Milly is now Director of Fine and Performing Arts at The Gordon School. She is a board member of The Wilbury Group and a teaching artist with Trinity Repertory's YASI program.

Nile Hawver (Fight Director) Previous work with CSC includes fight consultation for *Birdy*, *Death and the Maiden*, fight direction for *Our American Hamlet*, fight direction for CSC2's *Romeo and Juliet* and playing Sebastian (*Twelfth Night*) on the Common in 2014. As an actor: *Once* at Speakeasy Stage, *Breath*

and *Imagination*; (Lyric Stage) *Man of La Mancha*; (New Repertory Theatre), *Edward II*; (Actors' Shakespeare Project); *Finish Line*, (Boston Theater Company); *Violet and Mothers and Sons*, (Speakeasy Stage); *Etherdome*, (Huntington Theatre Company), Central Square Theatre, Greater Boston Stage Company, Montana Shakespeare in the Parks, Illinois Shakespeare Festival, Shakespeare Theatre of New Jersey, Ocean State Theatre Company, and more. MFA: University of Illinois at Urbana-Champaign. www.nilehawver.com | www.nilescottstudios.com

Renee L. Yancey (Production Manager) is a stage manager, production manager, and theatre educator. For CSC: Production Manager for *Richard III*; *A Midsummer Night's Dream* and *The Boys from Syracuse* (co-productions with Landmarks Orchestra); the CSC galas, 1985: New York City and A Midsummer Night's Dream; and *Much Ado About Nothing* (CSC Apprentice Program) Originally from Texas, Renee spent 10 years based in the Washington, D.C., area where she performed stage, production, and events management for Olney Theatre Center, Studio Theatre, theatre Washington/Helen Hayes Awards, Shakespeare Theatre Company, Velocity DC, and AFI Silver Spring. New England-area work includes Stage Manager for *Frankenstein* (Central Square Theater); *Heartland* and *Ripe Frenzy* (New Repertory Theatre); and *The Fantasticks* (Opera House Arts). Renee is a Lecturer and Program Head of Management for the School of Theatre at Boston University. Education: BFA Texas State University; MFA Boston University

Kevin Schlagle* (Production Stage Manager) returns to CSC after previously working on *Richard III*, *Love's Labour's Lost*, *King Lear*, and *The Two Gentlemen of Verona*. Other theatre credits include Huntington Theatre Company, American Repertory Theater, New Repertory Theatre, and Williamstown Theatre Festival. His opera credits include Boston Lyric Opera, Boston Baroque, Boston Opera Collaborative, Guerilla Opera, New England Conservatory, BU's Opera Institute, and Boston Youth Symphony Orchestras. He holds a BFA in stage management from Boston University.

CSC BOARD OF DIRECTORS AND STAFF

Board of Directors

David Friedman, *Chair*

Joan Moynagh, *Secretary*

Dennis Hong, *Treasurer*

Cara Abdulrazak, Christy Cashman, Irwin Heller, Will Lyman, Steven Maler,
Sam Mazzarelli *ex officio*, Scott Oran, Susan Poduska, Bryan Simmons

Artistic & Education

Steven Maler, *Founding Artistic Director*

Adam Sanders, *Associate Artistic Director*

Victoria Townsend, *Artistic Programs Manager*

Administration

Abigail Rollins, *Managing Director*

Natasha Cole, *Management and Development
Operations Associate*

Development

Erin Coffey, *Director of Development*

Rebecca Wallis, *Manager of Annual Giving
and Events*

Robin Hanley, *Grant Writer*

Bob Cullum, *Development Volunteer*

Marketing

Heather Darrow, *Director of Marketing*

Kati Mitchell, *Press & Media Relations*

Maya Rubio, *Marketing Intern*

Alicia Hartz, *Apprentice Marketing Contributor*

April Ropes, *Graphic Designer*

Melissa Wagner-O'Malley, *Graphic Designer*

Evgenia Eliseeva, *Photography*

Ernesto Galan, *Videographer*

Jeffrey Clevlen at Holland & Knight, LLP, *Legal
Representation*

Julian Friedman at Friedman, Hurwitz & Aliber,
Accountant

BLUE MAN GROUP

Charles Playhouse

All Summer Long

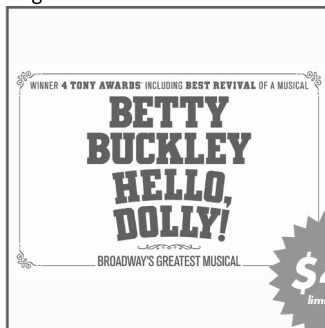


\$46

HELLO DOLLY!

Lexus Broadway In Boston

August 13 - 25



\$45
limited view

ARTSBOSTON

BOSTIX.ORG

CSC SPONSORS AND PARTNERS

Commonwealth Shakespeare Company deeply appreciates the generous sponsors and partners who support the 24th Anniversary Season of Free Shakespeare on the Common.

Lead Sponsor



Media Sponsors



Sponsors & Partners



SPECIAL THANKS

Mark Rice, Denning Aaris, Travis Killeen, Anjali Wali, Cheryl Roback, Leslie Chiu, Mark Lorenzo, Maggie McCauley, and Babson College, Julia Kohl and Janet Goff, Tricia Barnes and Comcast, Ellen Schned, Sol Doten, and Ovation TV, Nancy Dieterich, Gray Yelle and WGBH, Carolyn Sullivan, Erika Hale, Erin Maghran and *The Boston Globe*, Shannon Pastuszak, Ajah Polk, Ava Clemente, and *Boston Common Magazine/Modern Luxury*, Kennedy Elsey and Mix 104.1, Phil Crohan and Massachusetts Convention Center Authority, Anita Walker and Massachusetts Cultural Council, Ben Chow, Gary Chow and Vantage Printing, Blake Jordan, Noreen McMahon and Highland Street Foundation, Rosemarie Sansone, George Comeau, and Downtown BID, Commissioner Christopher Cook, Paul McCaffrey, Ranger Reggie Sampson, Lou Chianaca, and the Boston Parks and Recreation Department, Elizabeth Winters Ronaldson and MBTA, JC Decaux, Tanja Dominovic and Clear Channel Media, Klare Shaw and Liberty Mutual, Mike and Jessie Sartor and Shakesbeer, Chris Robinson, Cori Couture, David Chu, Sabrina Dennison, Jan Stankus, Accessibility Consultants, Dawn Simmons and Stage Source, Ryan Impagliazzo, Chad Sirois and ArtsBoston, Kara Elliott-Ortega and Kristina Carroll and the Mayor's Office of Arts and Culture, Betty Salammé and Greater Boston Concierge Association, Kamilla Carmignani and Greater Boston Convention and Visitors Bureau, Brad Fredericks and Back Deck, Lisa Robinson and Proforma, John Cini and High Output, Eric Frishman and United Staging and Rigging, Brian McCoy and McCoy Audio, Matthew Haronian, Ava Mascena, and Allison Russo, Will Lyman, Mallory Avery, Effie's Homemade, Bon Me, Ben and Jerry's, Pennypacker's, Taco Party, Say Pão de Queijo, Da Bomb, Bartleby's Seitan Stand.

Great theater lives here.

PARTY HARD WITH THE BARD

Macbeth In Stride

April 23 - May 10, 2020

On sale now to A.R.T. Members

How do we punish and celebrate women
who push too hard, who want too much,
who sing too loud?

The Donkey Show

FINAL SUMMER - Closes September 7

After ten years, party with us one last time.

Shakespeare and Studio 54 collide every Saturday
night in this adaptation inspired by
A Midsummer Night's Dream.



The hottest theater in Harvard Square.
AmericanRepertoryTheater.org

this is
**downtown
boston.**



Your Journey starts here.

Discover the best of Downtown Boston.
There is so much to see and do, including
more than 150 restaurants and a vibrant
shopping scene that features the largest
collections of jewelers in New England.
Spend the night in one of the eight luxury
hotels within walking distance of six
historic theaters. **The heart of the city
welcomes you to explore.**

downtownboston.org



Xfinity is providing a
FREE WiFi hotspot here on
the Common.

Select **xfinitywifi**
to log on throughout
the show.



BUSINESS IMPROVEMENT DISTRICT

#DowntownBoston

A WELCOMING COMMON FOR ALL: THE COMMON ACCESS INITIATIVE



Commonwealth Shakespeare Company is committed to providing a welcoming environment for our Free Shakespeare on the Common performances through our access and inclusion programs. The Common Access Initiative, will feature on-site accessibility services to patrons with mobility impairments as well as those who are Deaf, Hard-of-Hearing, Blind, and Visually Impaired. The staff at CSC are dedicated to welcoming and serving patrons of all abilities.

Our Services

- Open Captioned Performance: **Friday, July 26** (Raindate: Sat, July 27)
- ASL Interpreted: **Friday, August 2 + Saturday, August 3 (8pm)**; (Raindate: Sun, Aug 4)
- Audio Described: **Saturday, August 3 (3pm)**; (Raindate: Sun, Aug 4)
- Sound Enhancement Devices Available
- Braille and Large-Type Programs Available
- Accessible Seating reserved in several free seating locations around the Common
- Accessible seating available in CSC's Friends Section for a donation of \$75

Our Partners

We would like to thank our partners in access and inclusion: Chris Robinson from Boston University Office of Disability Services, Cori Couture, David Chu, Sabrina Dennison, Shana Gibbs.

CSC seeks to partner with additional community organizations to make Free Shakespeare on the Common more easily accessible. For special accommodations or information for your organization, please contact Front of House Manager, Nick Robinette at audienceservices@commshakes.org. For more complete information and schedule of performances, visit CSC's website at www.commshakes.org.

GLOBEDOCS FILM FESTIVAL | 5 YEARS

presented by **CROSS**

SAVE THE DATE
OCTOBER 2-6, 2019

COOLIDGE CORNER THEATRE
BRATTLE THEATRE
GLOBE.COM/FILMFEST

Join the GlobeDocs newsletter to learn more at
GLOBE.COM/Newsletters

CALGARY PHILHARMONIC ORCHESTRA PRESENTS



MORNINGSIDE

MUSIC BRIDGE

FREE CONCERT SERIES
NEW ENGLAND CONSERVATORY'S JORDAN HALL

ARTISTS IN RESIDENCE CONCERT
Saturday July 13, 2019 | 7PM

Violin: Diana Cohen, Ge Quan | Viola: Teng Li | Cello: Peter Stumpf
Piano: Roman Rabinovich, Meng-Chieh Liu

CONCERTO COMPETITION FINALS
Monday July 15, 2019 | 7PM

This exciting final round of the Morningside Music Bridge concerto competition makes for a breath-taking evening.

ARTISTS IN RESIDENCE CONCERT
Saturday July 20, 2019 | 7PM

Violin: Ayano Ninomiya, Yuan Quan | Viola: Hsin-Yun Huang, Misha Amory
Cello: Tian Bonlan

ARTISTS IN RESIDENCE CONCERT (WORKS BY TAN DUN)
Sunday July 28, 2019 | 7PM

Violin: Ian Swensen, Nikki Chooi | Viola: Kunbo Xu | Cello: Yu Wei
Piano: Krzysztof Jablonski, Jay Peng Chieh Sun

MMB YOUNG ARTISTS CONCERT WITH NPR'S FROM THE TOP
(FROMTHETOP.ORG)

Wednesday July 31, 2019 | 7PM
Guest Host: Paul Katz

GREATEST HITS - 2019

Friday August 2, 2019 | 7PM

The highlights of a month's events in one stellar performance.

The evening features a variety of solo and chamber ensemble performances featuring Morningside Music Bridge participants.

MORNINGSIDE MUSIC BRIDGE STRING ORCHESTRA

Saturday August 3, 2019 | 5PM

World Premier of new work by Jeffrey Ryan, conducted by
Earl Lee, Associate Conductor, Pittsburgh Symphony Orchestra



mmb.international

COMMONWEALTH SHAKESPEARE COMPANY SUPPORTERS

Your support helps us to fund our core programming, which includes Free Shakespeare on the Common, our productions as the Theatre in Residence at Babson College, and our educational programs. To learn more about how you can help support CSC, please visit our website, commshakes.org, or call us at 617-426-0863.

We gratefully acknowledge the following individuals, corporations, and foundations who have made gifts and pledges to the Annual Fund and event sponsorships through June 21, 2019. If your name was inadvertently omitted or misspelled, we apologize and ask that you contact us so that we may correct your listing for future programs.

\$50,000 and up

Anonymous
Anonymous, in honor of David Friedman

\$25,000-\$49,999

Jay and Christy Cashman
Liberty Mutual Foundation
Ricardo Rodriguez and Michael Kelley
The Klarman Family Foundation

\$10,000-\$24,999

Cara Abdulrazak and Stephen Walsh
Anika Agarwal and Amit Gupta
Coldwell Banker Residential Brokerage
Kerry Healey
Irwin and Sheila Heller
Dennis Hong and Rob Hagan
Royal Little Family Foundation,
Jann E. Leeming, Senior Trustee
Will and Anastasia Lyman
Steven Maler and Tony Liquori
Massachusetts Convention Center Authority
Massachusetts Cultural Council
Joan Moynagh and Adam Sholley
New Boston Ventures
Scott Oran and Meryl Kessler
Ovation LLC
Bill and Susan Poduska
Morwin Schmookler
The Harold & Mimi Steinberg
Charitable Trust
Scott and Kristen Utzinger

\$5,000-\$9,999

Anonymous
Jane Burbank and Rich Meelia
David Friedman
Highland Street Foundation
Twin Focus Capital
Howard and Michele Kessler
Henri Koenigsberg
Kyle Miller and Ashley Bernon
Spring Sirkin and Arthur Frank

\$2,500-\$4,999

Arcus Foundation
Elizabeth T. Ayer/Geoff Van Wyck
Boston Cultural Council
Martha Coakley and Tom O'Connor
Robert and Caroline Collings
Downtown Boston BID
The Honorable Stephen P. Driscoll
Youth in Philanthropy at Foundation
for MetroWest
Diane Gipson

Nancy Lukitsh
Sam Mazzairelli and Jonathan Soroff
Jenny Netzer and Ellis Seidman
Allison Ryder and David Jones
Wendy Shattuck and Sam Plimpton
Bryan Simmons
Stephen Kennedy Smith
The Paul and Edith Babson Foundation

\$1,000-\$2,499

Brooke Adams and Tony Shalhoub
Mitchell Adams
Eric and Phoebe Belsley
Dartagnan Brown
Paul and Catherine Buttenwieser
Robert Caro
Josh Carr
Denise Casper
Harry Collings and Dan Moon
Chris and Marianne Cooper
Daniela Corte and Stuart Roseman
Wayne Davis and Ann Merrifield
Christine Dunn
Nancy Gertner and John Reinstein
Rick and Peg Golden
Philip and Julie Gordon
Sarah Hancock
Tad Heuer and Shannon Monaghan
Karen Kaufman
Michael and Martha Keating
Wendy Lane
Richard and Judy Lappin
Claire Mansur and John Ryan
Glenn and Lisa Muir
Paul Nickelsberg
John and Heather Poduska
Ameek Ponda and Samia Kirmani
Suzanne Priebatsch
Michael Roitman
Paul Saba
Ned and Nicole Sahin
EJ Schneider
Jessica and Sam Slater
Colin and Jessica Stokes
The Kevin C. Kynock Foundation for the Arts
Jeff and Elisabeth Thompson
Douglas and Patricia Woodlock
Alan and Caroline Wu
Doris Yaffe

\$500 - \$999

Anonymous
Deborah Allinson
Janet Bailey
David Beardsley and Laura Tomasetti

Joseph Berman and Sharon Cantor
Boston Center for Adult Education
Patrick Canney
Yi-Hsin Chang and Eliot Morgan
Ingrid Chung and Michael Obuchowski
Fay Donohue
Walter and June Downey
Marjorie Eiref and Timothy Mansfield
Nancy Farese
Mark Fleming and Rachel Renton
Ellen Resnick Franco
Kurt Gress and Samuel Parkinson
Jacqueline Haley
Robin Hanley
Craig Hogan
Laura Homich and John Homich
John Hancock Financial Services, Inc.
Matching Gifts Program
Paul and Elizabeth Kastner
Edgar Knudson and Louis Mula
Mara Krechevsky
Jone LaBombard
Steven Lampert and Anita Feins
Lianne and Alexander Leventhal
Ralph and Linda Linsalata
Kathleen and Timothy Malley
John and Jo Frances Meyer
Microsoft
Annette Furst and Jim Miller
Dan Mullin
Needham Cultural Council
Steven Oleskey and Judith Tick
Stephen and Jeryl Oristaglio
Lily Poduska and Brian Flatley
Jay Pratt
Ramsey McCluskey Family Foundation
William Rawn and John Douhan
Gertrude and Terrance Regan
Will Sahakian and Reshma Sahakian
Nina Silber
Oleg Simanovsky and Martha Maguire
Sarah Sinclair
Ashley Wisneski and Will Heward
John Wolfarth and Kevin Powers
Janet Wu
Rya Zobel

\$250 - \$499

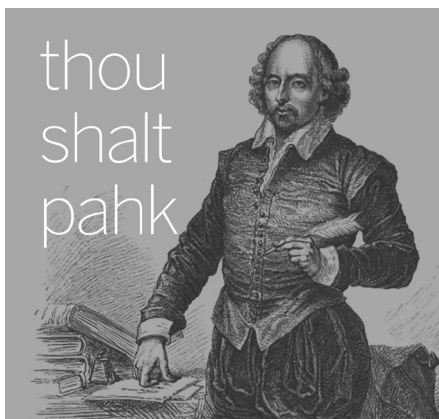
Jonathan Abbott and Shari Malyin
Geeta Aiyer
Kai Armstrong
Clifford Backman
Ann Barlow
Bruce and Katie Barnett
Kathleen Beckman and Theodore Postol

COMMONWEALTH SHAKESPEARE COMPANY SUPPORTERS

Donald and Nina Berk
Edward Boesel
Roni Boyles
Ricardo Brasil
Berton Bremer
David and Kathleen Bryson
Douglas Carr
Michael Carucci
Patrick and Ellen Centanni
Mary and Phil Chaves
Anne Clogston
Jack and Suzy Coffey
Kevin and Kristin Compton
Catherine Conneely
Brooke Chamberlain Cook
Jack Corrigan
Ty Cramer
John and Holly Cratsley
Alvin and Vicki Davis
Tim Deer
Angela Deeths
Anita Diamant and James Ball
Priscilla Douglas
Melody Eckardt
Michael Eizenberg
Jason Felsch
Chris and Katerina Ferraro
John Finley
Gerald Flannelly
Bethanne Flynn
Kristin Foley
Jeremy and Hilary Forster
Christine Garrity

Thomas Gellert
Alex Gonzalez
Lesli Gordon
William Gottlieb
Erminio Grasso and Michelle Grasso
Joan and Raymond Green
Gretchen Grozier
Rena Gyftopoulos
Tim Harrington
Veronica Heath and Donn Heath
John and Trevania Henderson
Jordan Hershman
Timothy Hillman
Marie Hoguet
Jane Honoroff
Mary and Richard Humber
Ed Hyatt
Eric and Nina Johnson
Michael Joyce
Martin and Allison Keck
James Kennedy
Monica Kim
Paul Knutrud
Al Larkin
Eric and Lori Lass
Ihsane Leckey
Anne Leiby
Susan Lester
Paul Levitt
Richard Lewis
Yin Li
Sharon Lobert
Donna Luff

Tracy Lustig
Jez Magarinos
Charlie Marz and Deedee Phillips
Stephen McCauley and Sebastian Stuart
Donna McGrath
Merit McIntyre and Jennifer C. McIntyre
Charles and Ronni McMillan
Cédric Mermier
Ben and Tonya Mezrich
Carie Michael
Gaetano Morello
Randy and Clare Nielsen
F. William Nigreen and Kathleen McDermott
Harvey Nosowitz
Joe Pagliuca and Felicia Pagliuca
John and Sharon Parisi
James Perrin
Ryan Persac
David Persampieri
Kathleen Phelps
Christine Pratt
Sean Quirk
Matthew Reidy
Linda Reimels
Virginia Richards
Andrew Rohm
Joanna Rothman
Kenneth Rothman
David Salant
Luke and Barbara Salisbury
Ellen Sarkisian
Ellen Sheets and John S. Yates, Jr.
Michele Silvia
Alix and Joseph Smullin
Adelbert Spitzer
David Spriggs
Anita Stout
Patricia Suzman
Faran Tahir
Ladd Thorne
Jonathan Throop
Thalia Tringo
Maureen Underhill
Michael Valdez
Debra Veneziano
Miriam Weizenbaum
Peter Wells
David and Sharon White
Rebecca Wilsker
Phyllis Yale and Tucker Taft
Grace and Josh Zakim



The Massachusetts Convention Center Authority is proud to sponsor another year of Shakespeare on the Common.

Enjoy convenient parking for the performances at the Boston Common Garage. Located beneath the Common, it's the ideal spot to begin and end your excursion.

**MASSACHUSETTS
CONVENTION CENTER
AUTHORITY**

Follow us on Twitter @MassConvention

To learn more or a make a donation:

- To learn more or make a donation:
- Contact Director of Development Erin Coffey at 617-426-0863 or development@commshakes.org
- Visit www.commshakes.org/ways-to-give
- Stop by the Information Tent during tonight's performance

Proud to be a Sponsor and
Exclusive Print Partner to
Commonwealth Shakespeare Company



V A N T A G E G R A P H I C S

INNOVATIVE THINKING. SMART PRINTING.



273 Lenox Street, STE 8
Norwood, MA 02062



www.vangraph.com



617.796.8800



SALES@VANGRAPH.COM

A Certified Supplier Diversity Office Business

T.F. ALLEN & COMPANY, P.C.

CERTIFIED PUBLIC ACCOUNTANTS

TIMOTHY F. ALLEN, CPA

400 WEST CUMMINGS PARK, SUITE 1150 • WOBURN, MA 01801

TEL. 617.489.9700 • FAX 617.489.0711 • Cell: 617-828-1846

E-MAIL: tim@tfallen.com

celebrating...

35th anniversary

6 marvelous productions

1 new artistic director

new
rep
35
ANNIVERSARY

3 thought-provoking plays – join the conversation

NIXON'S

Nixon

TRAYF

FENCES

NEW This Year: Drama Lovers Subscription Package

get the best seats at the best prices

first access to ticket reservations

3 shows for \$162 – 20% savings!

TRANSITION

2019-2020 SEASON

617-923-8487

newrep.org

**Big conversations
happen here.**

Jim Braude
& Margery Eagan

**BOSTON
PUBLIC
RADIO**

Weekdays
11am-2pm on
89.7 WGBH



LISTEN LIVE
wgbh.org/news

89.7 WGBH

Boston's Local NPR®

Support Free Shakespeare! Donate \$20: commshakes.org 33

IMPORTANT AUDIENCE INFORMATION

SEATING OPTIONS - *If you didn't bring your own and don't want to sit on the ground, we offer the following seating options:*

- **Rent a Lawn Chair:** \$5 rental fee (+ a \$5 refundable deposit).
- **Reserve a Chair in the Friends Section:** Available for a \$75 donation made in advance online (commshakes.org) or over the phone (617-426-0863). A limited number of chairs may be available at select performances without a reservation. Visit the Information Tent to the left of the stage for availability and more information.
- **Buy a Commonwealth Shakespeare Company blanket:** Water resistant and great for taking on picnics and future Free Shakespeare on the Common performances. Available for \$35 at our Merchandise Tents on either side of the stage.

FOOD OPTIONS – *In addition to satisfying your snack cravings, a portion of each sale goes to support Free Shakespeare on the Common:*

- **Water, Candy and Snacks:** Available for \$2. Sold by CSC Apprentices and volunteers circulating throughout the audience and at the tents on either side of the stage.
- **Ben & Jerry's:** Ice cream truck is located behind the Bandstand. Be sure to try our signature sundae, "I scream, you scream, we all scream for *Cymbeline*!"
- **Food Trucks:** Trucks are parked behind the Bandstand at most performances.

PARKING

Parking is available in the **Boston Common Garage**. Be sure to pick up a discount coupon from the Info Tent or from an usher to receive \$1 off your parking. These coupons are provided by the Massachusetts Convention Center Authority (MCCA). CSC receives a \$2 donation from the MCCA each time a coupon is used.

RESTROOMS

Portable toilets are located near the tennis courts.

THE GREENSHOW

CSC's Greenshow features actors from our Apprentice Program. Traditionally, a Greenshow is the prelude to an evening's performance, meant to prepare an audience for the main event. Our Greenshows are performed periodically before curtain right in the audience by our Apprentice Ambassadors. They are fun, lively, and appropriate for the whole family—a great way to learn more about *Cymbeline*! Feel free to ask our Ambassadors any questions you might have about the play, CSC, or Shakespeare!

MERCHANDISE

Hoodies, T-shirts, blankets, baseball hats, and other items are available for purchase at the CSC tents on either side of the stage. 100% of the proceeds go to benefit CSC.

SUPPORTING FREE SHAKESPEARE ON THE COMMON

CSC needs YOUR help to continue offering Free Shakespeare on the Common to Boston audiences for years to come. A suggested donation of \$20 or any amount that is meaningful to you is greatly appreciated.

- Give Online: Visit www.commshakes.org/ways-to-give
- Give In-Person: Leave a donation at any of the CSC tents before or after the performance.
- Apprentice Ambassadors will also collect donations just before showtime. To donate using a credit card, please check in with an Apprentice Ambassador carrying an iPad or visit the Info Tent.
- Text SHAKES to 444999 and follow the instructions to give via credit card.

STAY CONNECTED TO CSC

- Like us on Facebook and follow us on Twitter and Instagram at @commshakes.
- Visit our website to get more information about the show at commshakes.org/production/cymbeline/

SAVE \$5* • PROMO CODE • COMMSHAKE5



DOWNTON ABBEY THE EXHIBITION

EXPERIENCE THE HISTORY • THE FASHION • THE HOUSE

PRESENTED BY



VIKING



NOW OPEN
THE CASTLE AT PARK PLAZA
130 COLUMBUS AVE, BOSTON

BUY TICKETS TODAY • DOWNTONEXHIBITION.COM

*Offer based on ticket availability. Ends Sept. 29, 2019. Fees not included in offer. Offer redeemable on line, via call center, or in person at the box office using promo code: **COMMSHAKE5**. Offer not valid on previous purchases. Children 14 and under are FREE with paid ticket.

IN
ASSOCIATION
WITH



MASTERPIECE

PRODUCED
BY



NBCUniversal
INTERNATIONAL
STUDIOS

CARNIVAL

The logo features a large white '1' followed by two overlapping circles. The left circle contains a stylized globe with latitude and longitude lines. A small 'TM' trademark symbol is positioned to the upper right of the second circle.

BABSON CENTENNIAL 1919–2019

Proud home of the
Commonwealth Shakespeare Company
and entrepreneurs of all kinds.

babson.edu