



RICHARD III

BY WILLIAM SHAKESPEARE DIRECTED BY STEVEN MALER

JULY 18 - AUGUST 5, 2018
FREE ON BOSTON COMMON



COMMONWEALTH
SHAKESPEARE
COMPANY

SUGGESTED DONATION: \$20

COMMSHAKES.ORG   

#shakespeareonthecommon

OVATION | AMERICA'S ONLY ARTS NETWORK

VERSAILLES

THE FINAL SEASON
OCT 6 | 10PM ET



xfinity

Channel 915 | OvationTV.com

FROM THE ARTISTIC DIRECTOR

Dear Friends,

Welcome to Free Shakespeare on the Common and this evening's performance of *Richard III*. 23 years ago, I founded Commonwealth Shakespeare Company with the passionate belief that everyone deserves and should have access to the arts.

Today's soaring ticket prices can feel unattainable, and our goal is to make theater accessible for all as it was in the time of Shakespeare. Shakespeare on the Common is presented free of charge and welcomes upwards of 75,000 people to the Boston Common each summer. We have shared the wonder of live theatre with more than one million people over the past 23 years.

This production is inspired by Alexander McQueen's take on 1880's Jack the Ripper era silhouettes that are lean, mean, and evocative of a very dark time. This was a leaping off point to explore the aggressive and menacing world of the play and what lies beneath the sleek surfaces of these characters. The recent events in our world resonate all too strongly in *Richard III* which is why all of us at CSC cherish this opportunity to bring the great work of Shakespeare to all. We hope tonight's performance is not only entertaining but also encourages civic discussion and reflection, breaking down the walls between the art itself and ourselves.

We thank you for choosing to spend your time with us on the Common. I encourage you to help support our mission with a contribution of \$20 or more to help us continue to perform Shakespeare as it was meant to be—live, outdoors, and for the people. We are a small theater company; and each performance of *Richard III* costs over \$25,000 to present. In order to sustain our high-quality productions that are free to the public, we depend on the generosity of our amazing donors, supporters, and audiences.

We also hope you will join us beyond the Common for performances at our resident home, Babson College in Wellesley. We continue with performances of *Universe Rushing Apart: Blue Kettle* and *Here We Go*, an evening of one-act plays by Caryl Churchill, directed by Bryn Boice and featuring Karen MacDonald, and *Birdy*, adapted by Naomi Wallace from the novel by William Wharton, and directed by myself. Then it is back on the Common in the summer of 2019 for Shakespeare's *Cymbeline*, directed by Fred Sullivan, Jr.

Thank you for being with us tonight and supporting our important mission. Have a memorable evening and enjoy *Richard III*!

All the best,



Steven Maler
Founding Artistic Director



THE WORLD DOESN'T STOP SPINNING. NEITHER DO WE.

Discover emerging artists and revisit old favorites
online, at any time.

We'll be spinning the best in modern
and classic jazz at all hours, so visit us
and tune in at

wgbh.org/jazz247

WGBH JAZZ 24/7



The 23rd Season of Free Shakespeare on the Common
Commonwealth Shakespeare Company's
Production of

RICHARD III

by William Shakespeare | Directed by Steven Maler

Lead sponsor:



BABSON

July 18-August 5, 2018 | Tues-Sat @ 8pm | Sun @ 7pm | Matinee: August 4 @ 3pm

Scenic & Lighting Design

Costume Design

Sound Design and Original Music

Fight Director

Production Manager

Production Stage Manager

Eric Southern**

Jessica Pabst**

Nathan Leigh

Angie Jepson

Renee E. Yancey

Kevin Schlagle*

* Member of Actors' Equity Association, the Union of Professional Actors and Stage Managers in the United States

** Represented by United Scenic Artists, Local USA 829 of the IATSE



COMMONWEALTH
SHAKESPEARE
COMPANY

Steven Maler, Founding Artistic Director
Abigail Rollins, Managing Director



This program is supported in part by a grant from the National Endowment for the Arts and the Boston Cultural Council, a local agency which is funded by the Massachusetts Cultural Council, administered by the Mayor's Office of Arts, Tourism, and Special Events.

SYNOPSIS: RICHARD III



Richard III takes place in the aftermath of England's civil war dubbed the War of the Roses. It was fought between two factions within the royal family: the House of Lancaster with a red rose for its badge, and the House of York, with a white one. At the top of the play, the Yorks celebrate a decisive victory over the Lancasters, and while it seems that the fighting has come to a close, civil unrest leaves the newfound peace tenuous. (The title character, Richard, is alternately called by his given name, "Richard" and by the title of his dukedom, "Gloucester." After he becomes King, he is referred to solely as "Richard.")

Richard, the Duke of Gloucester, aims to take the crown of England, but there are several people ahead of him in line: the present King, Edward IV; the King's two young sons; and George, the Duke of Clarence.

Richard turns King Edward IV against Clarence, who is imprisoned. Richard vows to release Clarence, but has no intention of doing so; later, he hires two murderers to kill him. As Lady Anne mourns the death of her husband Edward and father-in-law King Henry VI, Richard woos her. She reluctantly agrees to marry him.

Queen Elizabeth laments King Edward's illness and impending death. She and Richard argue, but King Edward orders them to reconcile. Not long after, he dies. Elizabeth receives news that several of her family and close allies have been arrested, and that her eldest son, Prince Edward, soon to be Edward V, has been taken into custody by Richard. Later, the young Duke of York is also taken and the two children are kept in confinement in the Tower of London.

Richard and Buckingham plot two councils for the following day: one to prepare for Prince Edward's coronation, and a secret council to prepare for Richard's takeover. Richard promises Buckingham future titles in exchange for his loyalty. Together they begin picking off their adversaries.

this is downtown boston.

The destination for discovering Boston

Downtown Boston is the destination for shopping, dining and gathering. It also has the largest collection of jewelers in New England. Discover what's happening today.
downtownboston.org



**DOWNTOWN
BOSTON**

BUSINESS IMPROVEMENT DISTRICT

#DowntownBoston

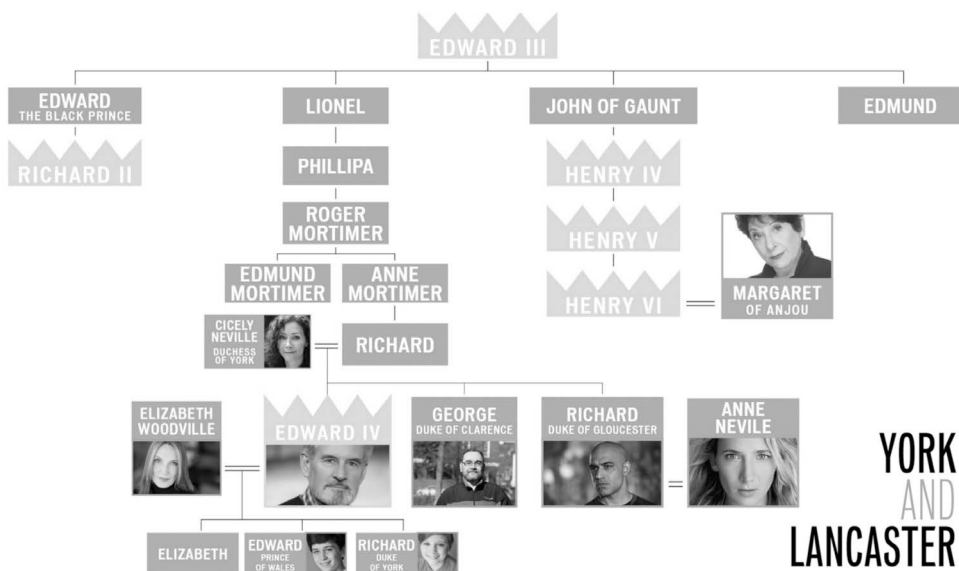
Richard and Buckingham spread rumors that the late King Edward's children are illegitimate and unfit heirs to the throne, making Richard the rightful heir. In a public show, Buckingham "coaxes" Richard to take the throne and he becomes King Richard III.

Despite their imprisonment, Richard is paranoid that the young princes pose a threat to his rule, and commands Buckingham to kill them. Buckingham decides Richard has gone too far and instead flees to Wales. Richard commissions Tyrrell to do the deed instead.

Henry, Earl of Richmond, a lord descended from the previously defeated Lancaster line, raises an army to take the crown from Richard. Meanwhile, Buckingham has been caught and executed. Richard and Richmond rally their troops, and in the ensuing battle, Richard is killed. Richmond becomes King Henry VII, thus ending the War of the Roses and instating the Tudor dynasty to the English throne.



RICHARD III FAMILY TREE



GLOBEDOCS DOCUMENTARY FILM FESTIVAL

SAVE THE DATE | OCT 10 - 14, 2018

COOLIDGE CORNER THEATRE | BRATTLE THEATRE | CITY HALL PLAZA



**GLOBEDOCS
FILM FESTIVAL**

presented by **CROSS**

GLOBE.COM/FILMFEST

@GlobeDocs



A HUB WEEK EVENT



RICARDO
Rodriguez
&
ASSOCIATES

COLDWELL BANKER'S #1 TEAM IN NEW ENGLAND & #15 IN THE NATION

Ricardo Rodriguez & Associates
RicardoBoston.com



**GLOBAL
LUXURY.**

TheMarcBoston.com | PORT45Boston.com | 10GloucesterBoston.com | 6UnionPark.com
FlatsOnMarion.com | TheHenryBoston.com | TheBoulevardBoston.com

Josh Carr, Senior Associate | Allison Cayzer, Sales Associate | Casey Cochran, Sales Associate
Casey Shaughnessy, Sales Associate | Alex Rivera, Rentals Associate | Alina Wolhardt, Design Associate
Brian Kelley, New York City Affiliate | Christophe Choo, Los Angeles/Beverly Hills Affiliate | Jonathan Garcia, Miami Affiliate

Real estate agents affiliated with Coldwell Banker Residential Brokerage are independent contractor sales associates and are not employees of Coldwell Banker Residential Brokerage. © 2018 Coldwell Banker Residential Brokerage. All Rights Reserved. Coldwell Banker Residential Brokerage fully supports the principles of the Fair Housing Act and the Equal Opportunity Act. Operated by a subsidiary of RHT LLC. Coldwell Banker® and the Coldwell Banker logo are registered service marks owned by Coldwell Banker Real Estate LLC.



ABOUT THE DIRECTOR

Steven Maler is the Founding Artistic Director of Commonwealth Shakespeare Company. At CSC he has been directing Free Shakespeare on the Boston Common productions since 1996, including *Love's Labour's Lost*, *King Lear*, *Twelfth Night*, *The Two Gentlemen of Verona*, *Coriolanus*, *All's Well That Ends Well*, *Othello*, *The Comedy of Errors*, *As You Like It*, *A Midsummer Night's Dream*, *The Taming of the Shrew*, *Hamlet*, *Much Ado About Nothing*, *Macbeth*, *Henry V*, *The Tempest*, *Julius Caesar*, and *Romeo & Juliet*. In collaboration with Boston Landmarks Orchestra, he directed *A Midsummer Night's Dream*, featuring the Overture and Incidental Music of Felix Mendelssohn, as well as concert stagings of *The Boys from Syracuse* and *Kiss Me, Kate* at Boston's iconic Hatch Shell.

Other CSC works include the critically acclaimed production of Ariel Dorfman's *Death and the Maiden*, the world premiere of Jake Broder's *Our American Hamlet*, and the world premiere of Robert Brustein's *The Last Will*. He directed Peter Eötvös's operatic treatment of Tony Kushner's *Angels in America* (U.S. Premiere) and Thomas Adès' *Powder Her Face*, *The Turn of the Screw* at New Repertory Theatre, *Santaland Diaries* and Chay Yew's *Porcelain* at SpeakEasy Stage Company, *Top Girls* and *Weldon Rising* at Coyote Theatre, and *The L.A. Plays* by Han Ong at A.R.T. His New York City credits include the New York Musical Theatre Festival production of *Without You*, written by and starring Anthony Rapp. The production has been seen in Boston, Edinburgh, Toronto, London and Seoul.

He received the Elliot Norton Award for Sustained Excellence as well as for Best Production, *Twelfth Night*; Outstanding Director, *A Midsummer Night's Dream*; Best Production, *Suburbia*; Best Solo Performance, John Kuntz's *Star****ers* (which also won Best Solo Performance Award at New York International Fringe Festival).

His feature film "The Autumn Heart", starring Tyne Daly and Ally Sheedy, was in the Dramatic Competition at the Sundance Film Festival.

ABOUT COMMONWEALTH SHAKESPEARE COMPANY



Commonwealth Shakespeare Company (CSC) is dedicated to artistic excellence, accessibility, and education. We present plays of the highest artistic caliber that celebrate ideas and language to create dialogue around compelling issues of our time. We eliminate barriers – physical, economic, and cultural – to bring live theater to audiences throughout

Greater Boston. We cultivate in young artists the value of community engagement, and collaborate with educators to bring literature to life in the classroom. In 2013, CSC became the Theatre-in-Residence at Babson College in Wellesley, Massachusetts, expanding its offerings beyond the Boston Common.



2018-2019 Join Us Beyond the Common!

*Universe Rushing Apart: Blue Kettle and Here We Go**

Two One-Act Plays by Caryl Churchill

Directed by Bryn Boice • Featuring Karen MacDonald

November 7-11 & November 15-18, 2018

Sorenson Black Box, Babson College

* Presented by special arrangement with SAMUEL FRENCH, INC

Birdy

Directed by Steven Maler

Adapted by Naomi Wallace from the novel by William Wharton

February 27-March 3 & March 7-10, 2019

Carling-Sorenson Theater, Babson College

Stage 2: Romeo & Juliet

By William Shakespeare • Directed by Adam Sanders

Featuring the CSC2 Company of early-career actors

Public Performance: May 31, 2019

2019 *Free Shakespeare on the Common: Cymbeline*

By William Shakespeare • Directed by Fred Sullivan, Jr.

Summer 2019 on Boston Common

Tickets go on sale late August!

Visit commshakes.org or call 617-426-0863



Help Keep Shakespeare Free For All!

Each performance of *Richard III* costs us more than \$25,000 to present to you and your fellow theater fans! With a contribution of \$20 or more, you can help us continue to perform

Shakespeare as it was meant to be – live, outdoors, and accessible to everyone!



It's easy to donate!



Got cash or check?

- Pass it along to one of our Apprentice Ambassadors in the lime-green t-shirts before the show begins.
- Stop by our Info Tent.
- Drop it in a donation box.
- Mail to: CSC, 231 Forest Street, Wellesley, MA 02457

Donating with a debit or credit card?

- Swipe! One of our Apprentice Ambassadors in an lime-green t-shirt can help you process it quickly and securely through one of our iPads.
- Stop by the Info Tent to “dip” your credit card in our DipJar
- Donate with Venmo @commshakes.
- Visit commshakes.org/ways-to-give.



CAST

<i>King Edward IV</i>	Richard Noble
<i>George, Duke of Clarence</i>	Remo Airdi*
<i>Richard, Duke of Gloucester, later King Richard III</i>	Faran Tahir*
<i>Queen Elizabeth, wife of Edward IV</i>	Deb Martin*
<i>Prince Edward, Edward IV's oldest son and briefly King Edward V</i>	Seamus Doyle
<i>Prince Richard, Edward IV's son</i>	Brendan O'Brien
<i>Lord Rivers, brother to Elizabeth</i>	Felix Teich
<i>Marquess of Dorset, son of Elizabeth</i>	Marge Buckley
<i>Lord Grey, son of Elizabeth</i>	Tyshon Boone
<i>Duchess of York, mother of Edward IV, George, and Richard</i>	Sarah Sinclair
<i>Queen Margaret, widow of Henry VI</i>	Bobbie Steinbach*
<i>Lady Anne, widow of Prince Edward, Henry VI's son, later wife of Richard of Gloucester</i>	Libby McKnight*
<i>Henry, Earl of Richmond, Later Henry VII</i>	Michael Underhill

Followers of Richard, Duke of Gloucester

<i>Duke of Buckingham</i>	Fred Sullivan, Jr.*
<i>Duke of Norfolk</i>	Richard Noble
<i>Sir Richard Ratcliffe</i>	Bailie de Lacy
<i>Sir William Catesby</i>	Billy Saunders, Jr.
<i>Sir James Tyrell</i>	Felix Teich

Followers of Henry, Earl of Richmond

<i>Earl of Oxford</i>	Mark Torres*
<i>Sir James Blunt</i>	Claire Alexander
<i>Sir Walter Herbert</i>	Kody Grasset

Others of the Court

<i>Lord Hastings, Lord Chamberlain</i>	Mark Torres*
<i>Lord Stanley, Earl of Derby</i>	Brandon Whitehead*
<i>Sir Thomas Vaughan</i>	Stefanie Resnick
<i>Sir Robert Brakenbury, Lieutenant of the Tower of London</i>	Kody Grasset
<i>Lord Mayor of London</i>	Remo Airdi*
<i>Archbishop of York</i>	Richard Noble
<i>Bishop of Ely</i>	Michael Saénz

<i>First Murderer</i>	Claire Alexander
<i>Second Murderer</i>	Ross Barron
<i>Messenger</i>	Susannah Wilson
<i>Messenger</i>	Michael Saénz
<i>Messenger</i>	Ross Barron
<i>Messenger</i>	Stefanie Resnick
<i>Messenger</i>	Jaine Ye

* Member of Actors' Equity Association, the Union of Professional Actors and Stage Managers in the United States

WHO'S WHO: CAST

Remo Airdi* (*Clarence/Lord Mayor*



of London) has appeared with CSC in *Love's Labour's Lost*, *Twelfth Night*, *The Two Gentlemen of Verona*, *Coriolanus*, *All's Well That Ends Well*, *The*

Comedy of Errors, and *The Taming of the Shrew*. He has appeared in over sixty productions at the American Repertory Theater, including last season's *Night of the Iguana*, *Oliver Twist* (also at Theatre for a New Audience and Berkeley Repertory Theatre), and *Island of Slaves* (IRNE Award—Outstanding Actor). Other credits: *Shakespeare in Love* (SpeakEasy Stage), *My Fair Lady*, *Sweeney Todd* and *Gypsy* (Lyric Stage), *Exposed* (Boston Playwrights' Theater), *Mistero Buffo* (The Poets' Theatre), *The Hound of the Baskervilles* (Central Square Theater), *The King of Second Avenue* (New Repertory Theatre) and productions at Hartford Stage, La Jolla Playhouse, Geffen Playhouse, Cirque du Soleil, American Conservatory Theater, Walnut Street Theatre, Prince Music Theater, Actors' Theatre of Louisville. He teaches acting and public speaking at Harvard University.

Seamus Doyle (*Prince Edward*) returns



to CSC after appearing in *Fear and Misery in the Third Reich*. Credits include the IRNE and Elliot Norton Award nominated production of *Fiddler*

on the Roof with New Repertory Theatre. He has appeared in over ten productions with Watertown Children's Theatre, *Seussical* (JoJo), *The Music Man* (Marcellus),

Grease (Vince Fontaine), *A Midsummer Night's Dream* (Nick Bottom), and *Les Misérables* (Fauchelevent). He most recently appeared as Christopher in *The Curious Incident of the Dog in the Night-Time* at Buckingham Browne & Nichols School. Film credits: "Bed Time Story", which premiered at Emerson College in Spring 2018.

Deb Martin* (*Queen Elizabeth*) returns



to CSC after appearing as Goneril in *King Lear*. Recent credits include Lady Bracknell in *The Importance of Being Earnest* and Lady Croom in Tom

Stoppard's *Arcadia* at The Gamm Theatre, Barbara in *Barbecue* at The Lyric Stage Co. of Boston, Sam in *Mud Blue Sky* at Bridge Repertory Theater (IRNE Award, Best Supporting Actress), Eleanor in *Casa Valentina* at SpeakEasy Stage, and Corrine in *Gideon's Knot* at Bridge Rep. Other roles include Victoria Grant in the 2nd National Tour of *Victor/Victoria*, Holly in *Next Fall* at SpeakEasy Stage, Anna in *Ivanov*, Irma in *The Balcony*, Helena in *A Midsummer Night's Dream*, and Kristin in *Miss Julie*. Development workshops with Huntington Theatre Company, ArtsEmerson, New Repertory Theatre and German Stage. Film: "Spartan" with Val Kilmer and William H. Macy, written and directed by David Mamet. Training: B.F.A., Emerson College, and trained with off-Broadway's Atlantic Theater Company, founded by William H. Macy and David Mamet.

Richard Noble (*King Edward IV/ Archbishop of York/Duke of Norfolk*)

a delighted newcomer to CSC, lives and works by day as a rare book librarian in



WHO'S WHO: CAST



Providence, where he has also appeared at the Gamm Theatre (going back to its days as Alias Stage), Perishable Theatre, and the Brown Playwrights' Festival,

Most recently, he has appeared as Galileo in Burbage Theatre's production of *Brecht's Galileo*. In earlier days he acted in a couple dozen productions at Wesleyan University, was a member of the Dartmouth Summer Rep, and frequently appeared at the Parish Players in Thetford, Vermont.

Libby McKnight* (*Lady Anne*) returns to CSC after appearing as Cordelia in *King Lear* and as a member of the Apprentice Company in 2011. She just graduated from Juilliard Drama's MFA program,



and she is so thankful to be reunited with CSC in her favorite city. Most recent credits include Andromache in *Trojan Women*, Everybody in *Everybody* (Juilliard), and Judith Bliss in *Hay Fever* (Panther Creek Arts). For Bryan Max Bemfeld.

Brendan O'Brien (*Prince Richard*) is thrilled to be making his debut with CSC. Previous Boston credits include *Merrily We Roll Along* (IRNE Nomination, Huntington Theatre), *appropriate*



(SpeakEasy Stage Company), *Show Boat* (Fiddlehead Theatre Company) and *State of Seige* (Theatre de la Ville/ArtsEmerson). Brendan has also performed in number of shows and Junior Show Choir with Boston Children's Theatre.

Michael Sáenz (*Bishop of Ely/Messenger*)



has returned to the Boston theater world after nine years in New York, where he acted, directed and produced off Broadway and worked as a teaching

artist for Lincoln Center and The New Victory Theatre. His play *Möbius* was a part of the New York International Fringe Festival. Local credits include *Sweeney Todd*, *The Winter's Tale* and *Lady in the Dark*. He teaches high school drama in Lynn and his play *The Thousand Natural Shocks* (based on his book) is in development with the Shakespeare Festival St. Louis.

Sarah Sinclair (*Duchess of York*) is a



Rhode Island actress. *Richard III* is her first production with CSC. Most recently, she has appeared in *Romeo and Juliet*, *Barbecue*, *Blithe Spirit*, *A Streetcar Named Desire* and *Gabriel* with RI theatres.

She studied and performed in New York City, and toured 40 cities as Helena in *A Midsummer Night's Dream*. She has been extremely active in the Gamm Studio in recent years, working on classical roles.

Bobbie Steinbach* (*Queen Margaret*) is



delighted to be back with CSC and Steve Maler, who gave her her first stab at the Bard as the Nurse in *Romeo & Juliet*, and where she was also seen as

Dogberry in *Much Ado About Nothing* and Maria in *Twelfth Night*. Bobbie is a Founding Member/Resident Actor with Actors'

WHO'S WHO: CAST

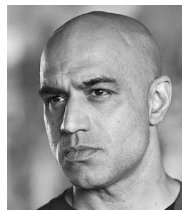
Shakespeare Project with whom she has played many roles including Paulina, Duchess of York, Mistress Quickly, Volumnia, and Cassius. (Elliot Norton Nomination, Outstanding Actress). She has also worked at many local theaters: Huntington Theatre Company, New Repertory Theatre, Lyric Stage Company, Greater Boston Stage Company, Boston Playwrights' Theatre, Merrimack Repertory Theatre and Speakeasy Stage Company. Bobbie is the recipient of The Elliot Norton Outstanding Actress award and several IRNE Best Actress awards. In 2015 The Theatre Communications Guild honored Bobbie with a two-year Resident Actor Fox Fellowship for Distinguished Achievement, for which she partnered with Actors' Shakespeare Project, and developed a company project, *I Am Lear*, and a solo show, *In Bed with the Bard*. She is also the 2016 Huntington Theatre Company's Lunt-Fontanne Fellow. Bobbie is an acting coach working mainly with high school students, preparing them for their college theatre auditions. www.bobbiesteinbach.com

Fred Sullivan, Jr.* (Duke of Buckingham) is celebrating 12 seasons with CSC. Fred has played Malvolio, Bottom, Gloucester, Capulet, Parolles, Menenius, Holoferness on the Common, the First Gangster in *Kiss Me, Kate* at the Hatch Shell and received an Elliot Norton Award for Outstanding Actor for his Jaques in CSC's *As You Like It*. He is a 35 season resident actor at Trinity Rep where he has appeared in 130 plays and received Norton and IRNE awards for Outstanding Lead Actor in *Blithe Spirit* and *His Girl Friday*. He directed Trinity



Rep's *A Christmas Carol*, *Shooting Star* and *Boeing Boeing*. Trinity roles include Falstaff, Bottom, Oscar Madison, James Tyrone, Jr, Joe Pitt, Captain Hook, Scrooge and Harold Hill. Fred is resident director for the Gamm Theatre since 1996 where he has directed 28 plays including *Hamlet* and *Much Ado about Nothing*, *Macbeth*, *King Lear*, *The Tempest* and *The Winter's Tale*, *The Dresser*, *The Glass Menagerie*, *Cat on a Hot Tin Roof*, *Arcadia* and *The Importance of Being Earnest*. His production of *Awake at Sing* at Gamm was awarded the Elliot Norton for Outstanding Production. As an actor at Gamm, Fred played Donny in *American Buffalo*, Autolycus in *The Winter's Tale* and Rothko in *Red*. Fred has acted for NJ Shakespeare Festival, Dallas Theatre Center, Berkeley Rep and Actor's Theatre of Louisville. He teaches acting at Gamm and RISD.

Faran Tahir* (Richard) returns to Boston



where he was first seen as Oberon in CSC's very first production of *A Midsummer Night's Dream* at Copley Square. He has recently played

the title role of Othello at the Shakespeare Theatre in Washington DC to rave reviews, and has performed in over 50 roles in major theaters across the US in classical and contemporary roles, including the A.R.T. The Goodman Theatre, Lincoln Center, and Manhattan Theatre Club. He has also appeared in 20 films and over 75 television roles. Recent film credits include the President in "Elysium" (2013), with Matt Damon and Jodi Foster; "Escape Plan" (2013), starring alongside Arnold Schwarzenegger and Sylvester Stallone; "Star Trek" (2009); and as the unforget-



WHO'S WHO: CAST

tably vicious nemesis in "Iron Man" (2008), opposite Robert Downey Jr. and Gwyneth Paltrow. Tahir's work on television spans across all genres, with recurring roles on "Scandal", "Prison Break", "Once Upon a Time", "12 Monkeys", "American Crime", "Satisfaction", "Dallas" and "Warehouse 13", and guest lead appearances on series such as "Shameless", "The Magicians", "Supergirl", "Blacklist", "Criminal Minds", "Elementary", "Supernatural", "Lost", "NYPD Blue", "Grey's Anatomy", among many others. He is a graduate of the A.R.T Institute for Advance Theatre Training at Harvard University. In memory of Tommy Derrah and Jeremy Geidt.

Mark Torres* (Lord Hastings/Earl of Oxford/Lord Chamberlain) returns to CSC, having recently appeared as Roberto Miranda in *Death and the Maiden*. He has worked on Broadway,



and at such regional theaters as Trinity Repertory in Providence, R.I., The Dallas Theater Center, Dallas Shakespeare Festival, The Walnut Street Theatre in Philadelphia, Arkansas Repertory Theatre, The Plaza Theatre in Dallas, Center Stage in Baltimore, Melody Top Theatre in Milwaukee, The Utah Shakespeare Festival, Actors Theatre of Louisville, Music Theatre of Connecticut, Ocean State Theatre, The

Theatre at Monmouth, Wellfleet Harbor Actors Theatre, Penobscot Theatre and the Maine Shakespeare Festival. He has also appeared on television and in several films. Mark is ably represented by Judy Boals, Inc.

Brandon Whitehead* (Lord Stanley, Earl of Derby) CSC credits include *Fear and Misery in the Third Reich*, Boyet in *Love's Labour's Lost*, Peter Quince in *A Midsummer Night's Dream*



on the Hatch Shell, and Fool in *King Lear*. Other recent credits include Amiens in *As You Like It* and Oscar Wilde et al in *The Importance of Being Earnest* at the GAMM Theater. Also Matthew Harrison Brady in *Inherit the Wind* and Mike Francisco in *Breaking Legs* at Ocean State Theater Company as well as Mr. Mushnik in *Little Shop of Horrors* with Tantrum Theatre (Ohio). Before moving to Massachusetts, Whitehead spent nearly twenty years working professionally in Seattle performing with ACT (*A Christmas Carol*, *Joe Egg*, *Dr. Jekyll and Mr. Hyde*), Seattle Repertory Theater (*Twelfth Night*, *The Imaginary Invalid*), Intiman (*Paradise Lost*), Seattle Shakespeare Company, Book-It Repertory Theater, Village Theater, and many others. Some of his film and television credits include "Castle Rock" (Hulu), "A Bit of Bad Luck", "21 and Over", and "Leverage".



Actors' Equity Association (AEA) was founded in 1913 as the first of the American actor unions. Equity's mission is to advance, promote and foster the art of live theatre as an essential component of our society. Today, Equity represents more than 40,000 actors, singers, dancers and stage managers working in hundreds of theatres across the United States. Equity members are dedicated to working in the theatre as a profession, upholding the highest artistic standards.

Equity negotiates wages and working conditions and provides a wide range of benefits including health and pension plans for its members. Through its agreement with Equity, this theatre has committed to the fair treatment of the actors and stage managers employed in this production.

AEA is a member of the AFL-CIO and is affiliated with FIA, an international organization of performing arts unions. For more information, visit www.actorsequity.org.

WHO'S WHO: CSC2

CSC2 is a company of actors that works with Commonwealth Shakespeare Company on an extended basis. The ensemble is built of twelve, non-equity, early-career actors working both as a cohort, learning from a diverse cast of their peers, and also alongside CSC's professional company in a variety of productions, including their own production of *Macbeth* presented in May 2018 at Babson College's Sorenson Center for the Arts, and this production of *Richard III*.

Claire Alexander (*First Murderer/Blunt*)



is absolutely thrilled to be making her debut with CSC2. NYC credits include Duke of Exeter (Hamlet Isn't Dead), Mark Antony (Genesius Theatre Company), Elmire (Onwheels Theatre), Adriana (Bergen Shakespeare), Saturnine (Hudson Shakespeare). Claire is a graduate of the Lee Strasberg Theatre & Film Institute in Method Acting, and holds a Bachelor's Degree in Vocal Performance from the Manhattan School of Music. www.claire-alexander.org

Ross Barron (*Second Murderer/Messenger*)



is proud to be on the Boston Common! On the way here, he studied a little at the Lucid Body House, Stella Adler Studios, and the Guildhall School in London, and studied a lot at Princeton University '17. An actor who enjoys performing in preexisting stories as much he does making his own, he most recently appeared in *Antigone* at Primary Stages. His favorite credits include: *Disco Pigs*, *The Seagull* (Lewis Center for the Arts), and *Metamorphoses* (Princeton Summer Theater). Playwright: *Revision* (Theater Intime). Film: Author/Lead of "Sticks and Stones" (Neymarc Visuals, *upcoming). www.rossbarron.com.

Tyshon Boone (*Lord Grey*)



Past credits include *Two Noble Kinsmen*, *A Midsummer Night's Dream*, *Golden Boy* at The Shakespeare Theatre of New Jersey. *All's Well That Ends Well* and *Antony & Cleopatra* at Virginia

Shakespeare Festival. BFA from University of the Arts.

Marge Buckley (*Dorset*)



is a recent graduate of Emerson College, where they performed in *The Caucasian Chalk Circle* (The Singer/Shauva), *We Are Pussy Riot* (Vladimir Putin), and *O Beautiful* (Brian Ryan). They recently appeared in the Underlings Theatre Company's *Romeo and Juliet* as Mercutio. Their plays, such as *God is a Woman*, *A Fable Regarding the Octopus*, *Anchortown*, and *The Earth Room* have been performed in Boston and New York.

Bailie de Lacy (*Sir Richard Ratcliffe*)



New York based actor recently seen playing Rosannah in *Brilliant Traces* at the Playroom Theater and Sonya in a new adaptation of *Uncle Vanya*. Boston credits include Lucille in *Parade*, Lydia in *Big Love*, Sinadab in the U.S. premiere of *Zobeide*, Francis/Bardolph/John of Lancaster in *Henry IV Part I*, Eve in *The Serpent* and Philomele in *The Love of the Nightingale*. Bailie earned her BFA in Acting from Boston University and studied physical comedy and Commedia dell'arte at the Academia dell'Arte in Arezzo, Italy. www.bailiedelacy.com

Kody Grassett (*Sir Robert Brakenbury/Sir Walter Herbert*)



recently returned to New England after receiving his MFA at the University of Central Florida in partnership with the Orlando



WHO'S WHO: CSC2

Shakespeare Theater. Recent credits include the Underlings Theatre Co's *Romeo and Juliet* (Nurse/Prince), Orlando Shakespeare's *Antony and Cleopatra* (Agrippa), *Blackberry Winter* (Grey Mole), and *West Side Story* (Glad Hand), TheatreUCF's *Reeling* (Big Man) and *The Divine Sister* (Mother Superior), and Guerrilla Shakespeare's *A Midsummer Night's Dream* (Demetrius/Cobweb/Starveling/Puck). He recently directed an adaptation of Shakespeare's *Macbeth* as part of his graduate thesis and has studied with Routalibero Teatro in Rome and the Royal Shakespeare Company in Stratford-upon-Avon.

Stefanie Resnick (*Sir Thomas Vaughan/*



Messenger) is originally from New York and received her MFA in Performance from UNLV. She has most recently been on tour with the Utah Shakespeare Festival's productions of *The Tempest* and *A Midsummer Night's Dream*. Stefanie has worked with Great River Shakespeare Festival, The Shakespeare Theatre of

New Jersey, Nevada Conservatory Theatre, and TITAN Theatre Company in NYC. stefanieresnick.com

Billy Saunders, Jr. (*Sir William Catesby*)



has has worked recently with Hartford Stage (*A Christmas Carol*), Capital Classics (*Love's Labour's Lost*), Monomoy Theatre (*Of Mice and Men, The Tempest*), Chesapeake Shakespeare (*As You Like It, Comedy of Errors*), and 4615 Theatre Co. (*The Pillowman*). New York credits include The Evoke Festival (*A Lottery*) and Village Playwrights. Billy has studied in the UK at Drama Studio London and is a proud graduate of The Hartt School. www.billysaundersjr.com @bsaundsjr

Felix Teich (*Rivers/Tyrell*) returns to CSC



after his time as an Apprentice in 2013. Locally he's worked with Actors' Shakespeare Project, Greater Boston Stage Company, Boston Playwrights'



Professional Backyard Grilling

Proud sponsor of Commonwealth Shakespeare Company

Join us after the show for dessert and cocktails

Just one block from the common

2 West st.

Corner of West & Washington

617 670-0320

Backdeckboston.com

facebook.com/backdeckboston



White choco-chip peanut oatmeal cookie
hazelnut ice cream sandwich

WHO'S WHO: CSC2

Theatre, Fort Point Theatre Channel, Brown Box Theatre Project, Sleeping Weazel, and Apollinaire Theatre Company. He graduated from Emerson College with a BFA in Acting and trained with Shakespeare and Company in the Berkshires in 2017.

Michael Underhill (*Henry, Earl of Richmond*) is a Boston born and bred actor. A graduate of Northeastern University, he has been an artistic associate with imaginary beasts since 2009. Since beginning his



post-collegiate career as an Apprentice with CSC in 2010, he has been grateful to share the stage with many other companies in the Boston theatre scene, including, but not limited to SpeakEasy Stage Company, Boston Playwrights' Theatre, Actors' Shakespeare Project, and The Gold Dust Orphans.

Susannah Wilson (*Messenger*) Recent credits include: *Nurse Play* (Exiled Theatre); *Julius Caesar* (Praxis Stage); *Both/ And: A Quantum Physics Play* (Catalyst Collaborative project with MIT); *A Midsummer Night's Dream*, *Hamlet* (Boston Theatre Co.); *Once a Blue Moon*, *Shahrazad* (Double Edge Theatre); and the title role in *Richard III* (Emerson Stage). She is a graduate of Emerson College where she received a BA in Acting.



Jaine Ye (*Messenger*) based in NYC, was last seen in the The Public Theater's Shakespeare in the Park production of *Julius Caesar*. Other credits: Don John in *Much Ado About Nothing*, Octavia in *Antony & Cleopatra*, and *Comfort Women: A New Musical* (off-broadway). TV/Film: "Yuna's Lunch" (short film), "Experience Curve" (web series).



Proud to be a Sponsor and
Exclusive Print Partner to
Commonwealth Shakespeare Company

V A N T A G E

G R A P H I C S

INNOVATIVE THINKING. SMART PRINTING.



273 Lenox Street, STE 8
Norwood, MA 02062



www.vangraph.com



617.796.8800

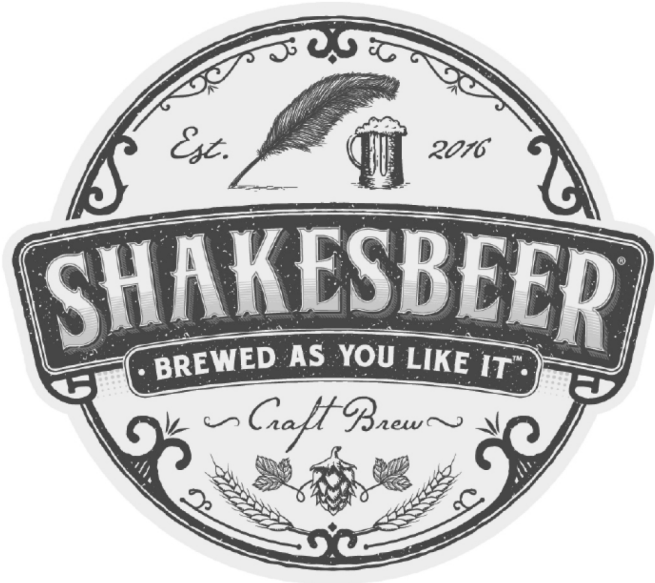


SALES@VANGRAPH.COM

A Certified Supplier Diversity Office Business



LOVE SHAKESPEARE?



DRINK SHAKESBEER.

At Shakesbeer, we celebrate the works of Shakespeare through the art of craft beer.

Available anywhere you can find great craft beer.

**Never too bitter, never to hoppy -
Simply *brewed as you like it.***

www.drinkshakesbeer.com

Hingham, Massachusetts



@ShakesbeerBeverages



@ShakesbeerBeverages



@RealShakesbeer

CSC APPRENTICE PROGRAM

The CSC Apprentice Program is an intensive summer training program for young professionals who are actively pursuing a career in theatre. Besides invaluable training, CSC offers a unique opportunity to work alongside theatre professionals on a truly massive scale. Our summer programming reaches over 75,000 audience members every year, and our Apprentices are an integral part of each successful season, as staff, company representatives, and performers. Classes include voice and text, as well as monologue coaching, several masterclasses, and other activities.

The Academy Showcase

The Apprentice Program culminates with two showcase performances that act as prologues to *Richard III*. These offer audiences a chance to come celebrate the work of the Summer Academy students and to see more Shakespeare! All performances are free.

Henry VI, Part II

Directed by Bryn Boice

The battle for the English crown continues. As tensions rise between York and Lancaster it is unclear who has the right to the throne. With the Duke of York gaining support, who will ultimately reach power and glory: the Duke or King Henry VI?

- July 26, 7:00 PM: Babson College, Sorenson Center for the Arts, Wellesley
- July 28, 2:00 PM: Boston Center for the Arts, Plaza Theater, Boston
- July 29, 7:30 PM: Hyde Community Center, Newton**
- August 1, 6:00 PM: Massachusetts Horticultural Society, Wellesley

Henry VI, Part III

Directed by Adam Sanders

Attempts at peace between House York and House Lancaster cannot last. As violence on the battlefield continues, political intrigue rises as well. The new Yorkist King Edward's controversial marriage could permanently divide the family and Richard, the Duke of Gloucester realizes his own ambitions for the English crown.

- July 27, 7:00 PM: Babson College, Sorenson Center for the Arts, Wellesley
- July 29, 2:00 PM: Boston Center for the Arts, Plaza Theater, Boston
- August 2, 6:30 PM: Brookline Public Library, Brookline*
- August 5, 7:30 PM: Hyde Community Center, Newton**

**With support from the Brookline Commission for the Arts*

***With support from the Newton Cultural Council*

Ask our Apprentices about *Richard III*, and watch them perform in green shows!



2018 CSC Apprentice Program Company

Allison Beauregard
Point Park University
Conservatory of Performing Arts

Nolan Burke
Hunter College

Salvatore Costantino III
Rhode Island College

Bobby DellaCamera
University of New Haven

Em Demaio
SUNY New Paltz

Torreke Evans
Atlanta, GA

Luis Angel Feliciano, Jr.
East Stroudsburg University

Rebecca Gracey
Skidmore College

Rachel Greene
Brandeis University

Michael Joseph Greene
Rhode Island College

Kirsten Hansen
Princeton University

Hayley Haggerty
RWU

Clara Hevia,
NYU

Alexandra Lin Holden
NYU/Stella Adler

Elaine Kline
Berklee College Of Music

Courtney Langlais
Suffolk University

Emily J. MacLean
URI

Scott Mathews
Madison, CT

Caitelin McCoy
Kenyon College

Caitlin McQuade
Hamilton College

Julia Messer
American University

Ashley Brooke Miller
Hofstra University

Nathan Mullen
Wesleyan University

Kallen Blair Prosterman
New York City

Mariel Stein
SUNY New Paltz

Bailey Story
University of Louisville

Nicholas Talbot
Bucknell University

Amber Walker
Ramapo College of New Jersey

Gabrielle Walker
Abilene Christian University

Anthony David Ward
Wilson, NY

Billie Wyatt
The American Musical and
Dramatic Academy Studio

Michael Zane
University of Nebraska-Lincoln



Visit us just one block
from Boston Common
for fresh prepared foods,
desserts, drinks, & more!

8 Summer Street • Boston



www.rochebros.com



Delicious, hand-crafted,
sustainable wines from New
Zealand. Proud supporter of
the work of CSC.

Register your email at
www.twelfthnightwines.com
and enter code CSC to
receive free shipping on all
wines from the website.



@TwelfthNightWines



@12thnightwines



@12thnightwines

PRODUCTION STAFF

Renee E. Yancey
Production Manager

Alex Schneps
Associate Production Manager

Gwendolyn Squires
Production Management Intern

Kevin Schlagle*
Production Stage Manager

Jenna Worden*
Assistant Stage Manager

Ashley Pitchford
Stage Management Intern

Avery Bargar
Company Manager

Caroline Cronin
Child Supervisor

Matt Ciommo
Stage Supervisor

Benjamin Swimmer
Production Assistant

Lindsey Walko
Production Assistant

Kendal Hooper
Associate Costume Designer

Becca Jewett
Costume Shop Manager

Katie Kenna
Draper

Becky Hylton
First Hand

Barbara Crowther
Wardrobe Supervisor

Jennifer Bennett
Costume Crafts

Amy Thomason
Assistant Wardrobe Supervisor

Rachel Zoey Mandelstam
Costume/Wardrobe Intern

Madeleine Brown
Wardrobe Intern

BeNTProductions, Inc.
Scene Shop

United Staging & Rigging, LLC
Staging

Patrick Goodsell
Props Artisan

Andrew Will
Associate Sound Designer

Jonathan Beals
Audio 2

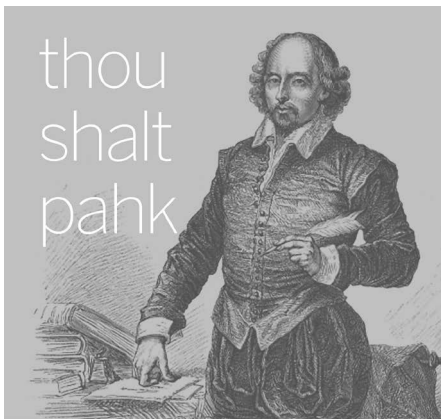
August Sylvester
Sound Intern

Brian McCoy
Chief Audio Engineer

McCoy Systems
Sound Equipment

Gifford Williams
Associate Lighting Designer

Andrew Andrews
Master Electrician



The Massachusetts Convention Center Authority is proud to sponsor another year of Shakespeare on the Common.

Enjoy convenient parking for the performances at the Boston Common Garage. Located beneath the Common, it's the ideal spot to begin and end your excursion.

**MASSACHUSETTS
CONVENTION CENTER
AUTHORITY**

Follow us on Twitter @MassConvention

Katherine Dumais
Assistant Master Electrician

Ariel Bourke
Electrics Intern

High Output, Inc.
Lighting Equipment

Lindsay Yost
Front of House Manager

Nikta Sabouri
Assistant Front of House Manager

Henry Lynch
Audience Services Intern

ARTISTIC STAFF

Steven Maler
Director

Eric Southern**
Scenic & Lighting Designer

Jessica Pabst**
Costume Design

Nathan Leigh
Sound Design and Original Music

Angie Jepson
Fight Director

Hannah Prygofle
Assistant Director

Adam Sanders
Dramaturg

Alex Heyman
Artistic Intern

* Member of Actors' Equity Association, the Union of Professional Actors and Stage Managers in the United States

** Represented by United Scenic Artists, Local USA 829 of the IATSE



WHO'S WHO: PRODUCTION STAFF

Eric Southern (Scenic & Lighting Design)** is an OBIE award winning designer for theater, opera, and dance. New York: *After the Blast*, *Bull in a China Shop*, *The Harvest*, *Ghost Light* (LCT3); *Sell/Buy/Date* (MTC); *Pocatello*, *Indian Summer* (Playwrights Horizons); *The Great Leap*, *Tell Hector I Miss Him*, *Good Television*, *10x25* (Atlantic); *Rimbaud in NY* (BAM, The Civilians); *Steve* (The New Group); *Buyer and Cellar* (London, CTG, New York, National Tour); *Chromatic* (ADI, The Kitchen, Susan Marshall and Company). His work with 600 Highwaymen has been seen throughout the US and Europe including *The Fever*, *This Great Country*, *The Record*, and *Employee of the Year*. Other Theater includes Primary Stages, Williamstown Theater Festival, The Guthrie, Kennedy Center, Baltimore Centerstage, Long Wharf, Huntington, Westport Country Playhouse, HVSF, Geffen Playhouse, Dallas Theater Center, and Kansas City Rep. Eric is also a freelance designer with the international lighting firm Lightswitch. Education: B.F.A. and M.F.A., NYU.

Jessica Pabst (Costume Design)**
Broadway: *Marvin's Room*, *The Heidi Chronicles*. Recent Off Broadway: *The Amateurs* (The Vineyard Theatre) *Marjorie Prime*, *The Whale* (Lucille Lortel Award; Playwrights Horizons). *The Ruins of Civilization*, *Taking Care of Baby*, *Murder Ballad* (Manhattan Theatre Club). *Fortress of Solitude* (The Public Theatre) as well as Lincoln Center, Second Stage, Primary Stages, Atlantic Theatre Company, The New Group and The Juilliard School. Regional: Actors Theatre of Louisville, Williamstown Theatre Festival, Long Wharf, Two River, Dallas Theatre

Center, Children's Theatre Company, and Center Theatre Group.

Nathan Leigh (Sound Design and Original Music) has designed sound and composed original music for over 300 plays at theatres including New York Theatre Workshop (*Nat Turner In Jerusalem*), Red Bull Theatre (*The Duchess of Malfi*), Huntington Theatre (*Skeleton Crew*), American Repertory Theatre, Berkshire Theatre Group, The Debate Society (Gothamist: Best Sound Design 2007 for *The Eaten Heart*), Stoneham Theatre (IRNE Best Sound Design 2009 for *Strangers On A Train*), and Central Square Theatre (IRNE Best Sound Design 2010 for *The Hound of the Baskervilles*). With Kyle Jarrow, Nathan co-created the musicals *Big Money* (WTF Boris Segall Fellowship 2008) and *The Consequences* (World Premiere 2012 at WHAT). With the Liars and Believers ensemble, Nathan Leigh composed scores for adaptations of *Song of Songs* and *Icarus*. With Megan Sass, he is the composer and lyricist for *The Mad Scientist's Guide* (NYC Fringe 2015). Nathan's latest solo album is "Ordinary Eternal Machinery".

Angie Jepson (Fight Director) is a fight choreographer, actress, and professor in the Boston area. She is thrilled to return to CSC after having worked as the Fight Director of *Romeo & Juliet*. Fight choreography credits include: *Villians' Supper Club* with Merrimack Repertory Theatre, *Tiger Style!*, *Becoming Cuba* and *M* with the Huntington Theatre Company, *Fences* with Gloucester Stage Company, *The Scottsboro Boys*, *Appropriate*, *Bloody Bloody Andrew Jackson*, and *Bad Jews*

WHO'S WHO: PRODUCTION STAFF

with SpeakEasy Stage Company, *Camelot* with New Repertory Theatre, and *Guards at the Taj* with Central Square Theatre among many others. Angie received her MFA in Acting from Brandeis University, is a Certified Teacher with the Society of American Fight Directors, and teaches at the New England Conservatory, the Boston Conservatory at Berklee, and UMass Boston.

Renee E. Yancey (Production Manager) is a stage manager, production manager, and educator. For CSC: Production Manager for *A Midsummer Night's Dream* and *The Boys from Syracuse* (co-productions with Landmarks Orchestra), the CSC galas, 1985: New York City and *A Midsummer Night's Dream*, and *Much Ado About Nothing* (CSC Apprentice Program). Originally from Texas, Renee spent 10 years based in the Washington, D.C., area where she performed stage, production, and events management for Olney Theatre Center, Studio Theatre, theatreWashington/Helen Hayes Awards, Shakespeare Theatre Company, Velocity DC, and AFI Silver Spring. New England-area work includes Stage Manager for *Ripe Frenzy* (New Repertory Theatre/BCAP), *The Fantasticks* (Opera House Arts), *The Honey Trap* and *Faithless* (Boston Playwrights' Theatre). Renee is a Lecturer and Program Head of Stage Management for the School of Theatre at Boston University. Education: BFA Texas State University; MFA Boston University.

Kevin Schlagle* (Production Stage Manager) returns to CSC after previously working on *The Two Gentlemen of Verona*, *King Lear*, and *Love's Labour's Lost*. Other theatre credits include Huntington Theatre Company, American Repertory Theater, New Repertory Theatre, and Williamstown Theatre Festival. His opera credits include Boston Lyric Opera, Boston Baroque, Boston Opera Collaborative, Guerilla Opera, New England Conservatory, BU's Opera Institute, and Boston Youth Symphony Orchestras. He holds a BFA in stage management from Boston University and is a proud member of Actors' Equity.

AWAKENING

2018-2019 SEASON

new
rep
THEATRE

STRAIGHT WHITE MEN

SEP 7-30/2018

SEARING SATIRICAL COMEDY
STRAIGHT WHITE MEN
BY YOUNG JEAN LEE
A NEW ENGLAND PREMIERE

WE WILL NOT BE SILENT

OCT 13-NOV 4/2018

COMPELLING HISTORICAL DRAMA
WE WILL NOT BE SILENT
BY DAVID MEYERS
A NEW ENGLAND PREMIERE

1776

NOV 30-DEC 23/2018

AMERICA'S PRIZE WINNING MUSICAL
1776
MUSIC AND LYRICS BY SHERMAN EDWARDS
BOOK BY PETER STONE
BASED ON A CONCEPT BY SHERMAN EDWARDS
ORIGINAL PRODUCTION BY PETER HUNT
ORIGINALLY PRODUCED ON THE BROADWAY STAGE BY STUART OSTROW

Heartland

JAN 12-FEB 9/2019

EVOCATIVE EXISTENTIAL DRAMA
HEARTLAND
BY GABRIEL JASON DEAN
A NATIONAL NEW PLAY NETWORK ROLLING WORLD PREMIERE

Still Standing

FEB 9-MAR 3/2019

INSPIRATIONAL ONE-WOMAN MUSICAL
STILL STANDING
WRITTEN AND PERFORMED BY ANITA HOLLANDER

cardboard piano

MAR 23-APR 14/2019

ENGAGING SOCIO-POLITICAL DRAMA
CARDBOARD PIANO
BY HANSOL JUNG
A NEW ENGLAND PREMIERE

BECOMING Dr. Ruth

MAR 23-APR 14/2019

HEARTWARMING BIOGRAPHICAL COMEDY
BECOMING DR. RUTH
BY MARK ST. GERMAIN

Learn more at newrep.org or call 617-923-8487



CSC BOARD OF DIRECTORS AND STAFF

Board of Directors

David Friedman, *Chair*
Joan Moynagh, *Secretary*
Scott Utzinger, *Treasurer*

Cara Abdulrazak, Anika Agarwal, Christy Cashman, Irwin Heller, Tad Heuer,
Dennis Hong, Will Lyman, Steven Maler, Sam Mazzarelli, Kier McDonough,
Scott Oran, Susan Poduska, Bryan Simmons

Artistic & Education

Steve Maler, *Founding Artistic Director*
Adam Sanders, *Associate Artistic Director*
Victoria Townsend, *Artistic Programs Manager*
Hannah Pryfogle, *Artistic Directing Intern*

Administration

Abigail Rollins, *Managing Director*

Development

Erin Coffey, *Director of Development*
Julia Ashton, *Manager of Annual Giving and Events*
Janet Goff, *Special Events Consultant*
Ellen Weiner, *Grant Writer*
Natasha Cole, *Development Operations Intern*
Abby Lass, *Development Assistant Intern*
Bob Cullum, *Development Volunteer*

Marketing & Patron Services

Heather Darrow, *Director of Marketing*
Kati Mitchell, *Press & Media Relations*
Emma Dumont, *Marketing Intern*
Billy Saunders, Jr., *CSC2 Marketing Contributor*
Nolan Burke, *Apprentice Marketing Contributor*
April Ropes, *Graphic Designer*
Melissa Wagner-O'Malley, *Graphic Designer*
Evgenia Eliseeva, *Photography*
Nile Hawver, *Photography*
Ernesto Galan, *Videographer*

Jeffrey Clevett at Holland & Knight, LLP,
Legal Representation
Steven Kleinberg, *Bookkeeping*
Julian Friedman at Friedman, Hurwitz & Aliber,
Accountant

ARTSBOSTON

BOSTIX.ORG

GREAT DEALS ALL SUMMER LONG

UP TO **50% OFF**
ON 100s OF SHOWS



The Book of Mormon
Broadway In Boston
August 14 - 26

Cirque du Soleil LUZIA
Suffolk Downs
Now - August 12

Blue Man Group
Charles Playhouse
Performances Daily

CSC SPONSORS AND PARTNERS

Commonwealth Shakespeare Company deeply appreciates the generous sponsors and partners who support the 23rd Anniversary Season of Free Shakespeare on the Common.

Lead Sponsor



Media Sponsors



Sponsors & Partners



SPECIAL THANKS

Kerry Healey; Mark Rice; Tristan Chaput; Anjali Wali; Travis Killeen; Cheryl Roback; Leslie Chiu; Mark Lorenzo; Maggie McCauley; and Babson College; Tricia Barnes and Comcast; Ellen Schned and Ovation TV; Nancy Dieterich; Gray Yelle and WGBH; Carolyn Sullivan; Erika Hale; Erin Maghran and *The Boston Globe*; Wendy Semonian; Dawn Martin and *Improper Bostonian*; Kennedy Elsey and Mix 104.1; Ricardo Rodriguez & Associates; Phil Crohan; Nate Little and Massachusetts Convention Center Authority; Anita Walker and Massachusetts Cultural Council; Ben Chow; Gary Chow and Vantage Printing; Blake Jordan; Noreen McMahon and Highland Street Foundation; Rosemarie Sansone; George Comeau and Downtown BID; Commissioner Christopher Cook; Paul McCaffrey; Ranger Reggie Sampson; Lou Chianaca; and the Boston Parks and Recreation Department; Elizabeth Winters Ronaldson and MBTA; Camille Edwards and JC Decaux; Tanja Dominovic and Clear Channel Media; Klare Shaw and Liberty Mutual; Chris Robinson; Jan Stankus; Liz Montigny Accessibility Consultants; Julie Hennrikus and Stage Source; Ryan Impagliazzo; Chad Sirois and ArtsBoston; Julie Burros; Betty Salammé and Greater Boston Concierge Association; Kamilla Carmignani and Greater Boston Convention and Visitors Bureau; Boston University College of Fine Arts; Mike and Jessie Sartor and Shakesbeer; Brad Fredericks and Back Deck; Tivon Marcus, Andrew Darcey and Broadway In Boston; Tyler Prendergast; Dramaturgy Slides; Debbie Mann Jacobs and Creative Impressions; Inc.; Barry Sneirson and Print and Media Solutions John Cini and High Output; Eric Frishman and United Staging and Rigging; Brian McCoy and McCoy Audio; Baja Taco; Bon Me; Taco Party; Earl of Sandwich; Jason Sweeney and Ben and Jerry's.



Head for the hills.



Tanglewood

JUNE 15–SEPTEMBER 2

Enjoy concerts with Andris Nelsons and the Boston Symphony Orchestra at the idyllic summer home of the BSO. Don't miss performances by world-renowned guest artists, concerts featuring the Boston Pops, and the season-long tribute to Leonard Bernstein.

tanglewood.org • 888-266-1200

BETWEEN LENOX & STOCKBRIDGE, MA



The Improper Bostonian



@theimproper

617.859.1400 | IMPROPER.COM
142 Berkeley Street, Boston

Support Free Shakespeare! Donate: commshakes.org 27

A WELCOMING COMMON FOR ALL: THE COMMON ACCESS INITIATIVE



Commonwealth Shakespeare Company is committed to providing a welcoming environment for our Free Shakespeare on the Common performances through our access and inclusion programs. The Common Access Initiative, funded by the Liberty Mutual Foundation, will feature on-site accessibility services to patrons with mobility impairments as well as those who are Deaf, Hard-of-Hearing, Blind, and Visually Impaired. The staff at CSC are dedicated to welcoming and serving patrons of all abilities.

Our Services

- Open Captioned Performance*
- American Sign Language (ASL) – Interpreted Performances*
- Audio-Described Performance*
- Sound Enhancement Devices Available
- Braille and Large-Type Programs Available
- Accessible Seating reserved in several free seating locations around the Common
- Accessible Seating available in CSC's Friends Section for a donation of \$75

* Check commshakes.org for scheduled accessible performances.

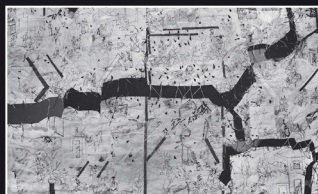
Our Partners

We would like to thank our partners in access and inclusion: Chris Robinson from Boston University Office of Disability Services, Jan Stankus, and Liz Montigny, Audio Describers and Consultants.

CSC seeks to partner with additional community organizations to make Free Shakespeare on the Common more easily accessible. For special accommodations or information for your organization, please contact Front of House Manager Lindsay Yost at audienceservices@commshakes.org. For more complete information and schedule of performances, visit CSC's website at www.commshakes.org.

BABSONARTS

Coming this Fall:



Objects are Closer Than They Appear: Roya Amigh

Artist Talk and Reception:

Thursday, September 6, 5:00 P.M.

Exhibit on View: September 6 - October 26

The Idol

A film by Hany Abu-Assad

Tuesday, October 23, 7:00 P.M.



BabsonARTS, 231 Forest Street, Wellesley, MA 02457

babsonarts.org





“JM CURLEY’S BURGERS GET IT DONE” - SERIOUS EATS

“...WONDERFUL MIXED DRINKS” - CBS BOSTON

“FOOD MADE WITH REAL, LOCAL PRODUCTS” - BOSTON MAG.

Lunch★Brunch★Supper★Late Night

~ Open ‘til 2 AM ~

Right by the Common - 21 Temple Place | 617-338-5333 | jmcurleyboston.com

Bin 26
ENOTECA

“TOP 10 WINE BARS IN THE USA” - FOX NEWS

“...WINE LOVERS’ RETREAT!” - THRILLEST

“DISHES ARE SOPHISTICATED, RATHER SPARE
CREATIONS MEANT TO COMPLEMENT WINES RATHER
THAN KNOCK YOU OVER” - BOSTON.COM

Hours of Operation: Monday – Thursday 12:00 noon – 10:00 PM
Friday 12 noon – 11 PM | Saturday 10am – 11 PM | Sunday 10am – 10 PM

Right by the Common - 26 Charles Street | 617-723-5939 | bin26.com

COMMONWEALTH SHAKESPEARE COMPANY SUPPORTERS

Your support helps us to fund our core programming, which includes Free Shakespeare on the Common, our productions as the Theatre in Residence at Babson College, and our educational programs. To learn more about how you can help support CSC, please visit our website, commshakes.org, or call us at 617-426-0863.

We gratefully acknowledge the following individuals, corporations, and foundations who have made gifts and pledges to the Annual Fund and event sponsorships through June 28, 2018. If your name was inadvertently omitted or misspelled, we apologize and ask that you contact us so that we may correct your listing for future programs.

\$50,000 and up

Anonymous
Anonymous in honor of David Friedman

\$20,000-\$49,999

Anika Agarwal and Amit Gupta
Jay and Christy Cashman
Liberty Mutual Foundation
Ricardo Rodriguez and Michael Kelley
Ricardo Rodriguez & Associates
The Boston Foundation
The Klamman Family Foundation

\$10,000-\$19,999

Related Beal
Coldwell Banker Residential Brokerage
Irwin and Sheila Heller
Law Offices of Sonja B. Selami
Will and Anastasia Lyman
Massachusetts Convention Center Authority
Massachusetts Cultural Council
Steve Maler and Anthony Liquori
Joan Moynagh and Adam Sholley
National Endowment for the Arts
New Boston Ventures
Scott Oran and Meryl Kessler
Ovation LLC
The Harold & Mimi Steinberg Charitable Trust

\$5,000-\$9,999

Cara Abdulrazzak and Stephen Walsh
Jane Burbank and Rich Meelia
Anonymous
David Friedman and Jennifer Sun
Kerry Healey
Highland Street Foundation
Dennis Hong and Rob Hagan
Metric Construction
Bill and Susan Poduska
Scott and Kristen Ulltzinger

\$1,000-\$4,999

Adeo Alday and Troy Cox
Arcus Foundation
Jason Arndt
Roman Battle and Thomas Bosick
Boston Cultural Council
British Consulate General Boston
Josh Carr
Chris and Marianne Cooper
Daniela Corte and Stuart Roseman
Amber and Michael D'Amelio
Downtown Boston BID
The Honorable Stephen P. Driscoll
Charles and Karin Dumbaugh
Christine Dunn
Marjorie Eiref and Timothy Mansfield

Gail Flatto
Nancy Gertner and John Reinstein
Diane Gipson
Rick and Peg Golden
Tad Heuer and Shannon Monaghan
Michael and Martha Keating
Henri Koenigsberg and Marc Plonsky
Wendy Lane
Richard and Judy Lappin
Nancy Lukitsh
Sam Mazzarelli and Jonathan Soroff
Gaetano Morello
Glenn and Lisa Muir
Jenny Netzer and Ellis Seidman
Newton Cultural Council
La Vie Millenium Place
Ameek Ponda and Samia Kirmani
Suzanne Priebatsch
Bryan Rafanelli
Michael Roitman
Allison Ryder and David Jones
Paul Saba
Wendy Shattuck and Sam Plimpton
Bryan Simmons
Spring Sirkin and Arthur Frank
Jessica and Sam Slater
Esmeralda Swartz
The Baupost Group, L.L.C.
The Kevin C. Kynock Foundation for the Arts
Ken Tutunjian
Madeline Wang and Archan Basu
Douglas and Patricia Woodcock
Alan and Caroline Wu

\$500-\$999

Anonymous
Deborah Allinson
Janet Bailey
Eric and Phoebe Belsley
Brookline Commission for the Arts
Robert Caro
Yi-Hsin Chang and Eliot Morgan
Mary and Phil Chaves
Martha Coakley and Tom O'Connor
Harry Collings
Jean Cunningham
Alex Danaïs
Heloisa and Paul Fitzgerald
Ellen Resnick Franco
Joseph Gabriele
Sarah Hancock
Elizabeth Ann Hylton
Nina and Eric Johnson
Paul Karger and Melissa Donovan
Paul and Elizabeth Kastner
Karen Kaufman
Bobby Kelley

Leila Kinney and Paul Summit
Claire Mansur and John Ryan
Microsoft
Annette and Jim Miller
Dan Mullin
Julia Noulin-Merat
Steven Oleskey and Judith Tick
Stephen and Jeryl Oristaglio
Samuel Parkinson and Kurt Gress
Poonam Patni
Lily Poduska and Brian Flatley
William Rawn and John Douhan
Gertrude and Terrance Regan
Gail Roberts
Philippe Saad
EJ Schneider
Mary Shannon
Stephen Smith
Susan Weiler
Ashley Wisneski and Will Heward
John Wolfarth and Kevin Powers
Rya Zobel

\$250-\$499

Mitchell Adams
Theresa Alexander
Karen Allen
Kai Armstrong
Michelle and Andrew Ayer
Baja Taco Company
Michael Barza and Judith Robinson
Rebecca Bays
Patricia Bellingier and Richard Balzer
Andrea Benoit and Michael Parsons
Melanie Blower
Roni Boyles
Karri and Jamie Bruneau
David and Kathleen Bryson
Laura Burnham
Nancy Cantelmo
Douglass Carr
Edmund Case
Anne Clogston
Keith Collier
Brooke Chamberlain Cook
John and Holly Cratsley
Paul Curtis
Wayne Davis
Anita Diamant and James Ball
Laura Dillon
Alexia Duc
Melody Eckardt
Jane Eiras
Michael Eizenberg
Jason Felsch
Gerald Flannelly
Kristin Foley



COMMONWEALTH SHAKESPEARE COMPANY SUPPORTER

Elizabeth Frick
Troy Gatliffe
Michael Gieger
Christopher Gorham
Bill Gottlieb
Terri Grifa
Nancy Grogan
Gordon and Mary Jill Harper
Colin Hayward
Trevania and John Henderson
Belinda Hsu
Daniel Hulkower
Mary and Richard Humber
Ed Hyatt
Intel Corporation
Jane Kelley
James Kennedy
Susan Kennedy
Phyllis and Marc Kirschner
Edgar Knudson and Louis Mula
Paul Knutrud
Margaret Kruk
Steven Lampert and Anita Feins
Al Larkin
Lori and Eric Lass

Anne Leiby
Stephen Leichtman
Joan Lenington
Susan Lester
Richard Maas
Marsha and Mark MacLean
Martha Maguire
Kathleen Malley
Charlie Marz and Deedee Phillips
Ellen McCann
Stephen McCauley and Sebastian Stuart
Karen McConomy
Merit McIntyre
Carie Michael
Virginia Mills
Cristina Mirshekari
Victoria Mix
Michael Newman
Randy and Clare Nielsen
Carole and Ray Noveck
Alan Onstad
John and Sharon Parisi
James Perrin
Linda Reimels
Andrew Rohm

James Rooney
Joanna Rothman
Nicole Sahin
Wayne Saltsman
Adam Schlichtmann
Christine Schmitt
Karen Shashoua
Ellen Sheets and John S. Yates, Jr.
Jane Siegel
Corina Silva
Michele Silvia
Oleg Simanovsky and Martha Maguire
Elizabeth Skelly
Dawn Smith
Morris Stambler
Colin and Jessica Stokes
Ethan Strominger
Patricia Suzman
Thalia Tringo
Margaret Walker
Miriam Weizenbaum
Harry Wilcox
Doris Yaffe
Grace and Josh Zakim
Heidi Zdrojeski

To learn more or a make a donation:

- Contact Director of Development Erin Coffey at 617-426-0863 or development@commshakes.org
- Visit www.commshakes.org/ways-to-give
- Stop by the Information Tent during tonight's performance



DINE^{OUT} BOSTON

SINCE 2001

DINEOUTBOSTON.COM

Presented by:



Sponsored by:



Additional Sponsors:



Charitable Partner:

MLK Boston

#dineoutboston

A FINE TIME TO DINE.

DINE OUT BOSTON[®]

AUGUST 5-10 & 12-17

LUNCH: \$15, 20, 25 DINNER: \$28, 33, 38





Don't miss A.R.T.'s 2018/19 Season.

INCLUDING

Othello

January 13 – February 9, 2019

In Shakespeare's most intimate tragedy, director Bill Rauch (*All the Way*) explores society's polarizing struggles with difference. A.R.T. brings the original company of Oregon Shakespeare Festival's acclaimed production to Cambridge this winter!

Subscriptions on sale now from \$99
Single Tickets on sale Nov. 20

EXPERIENCE
THE
a.r.t.

Located in the heart of Harvard Square.

AmericanRepertoryTheater.org

THE BARD ALWAYS SAYS IT BEST

Eat and drink as friends

COMMON VINES™
WINE • BEER • SPIRITS • PROVISIONS

Make your own park picnic: bottles, cans and cases of the best wine, beer and spirits + gourmet snacks!

TASTE WINE BAR
& KITCHEN

Come for the amazing food, stay for the great wine and beer list at this neighborhood favorite!

Just Steps from the Common

100-101 SUMMER STREET



BETWEEN RIVERSIDE AND CRAZY

FUN HOME

SMALL MOUTH SOUNDS

ONCE

**SCHOOL GIRLS;
OR, THE AFRICAN MEAN GIRLS PLAY**

THE VIEW UPSTAIRS

ELLIOTT PURCELL, TIM HACKNEY & DAMON SINGLETARY IN THE CURIOUS INCIDENT OF THE DOG IN THE NIGHT-TIME
PHOTO BY NILE SCOTT STUDIOS

Subscriptions Start at \$168 | SpeakEasyStage.com | 617-482-3279

T.F. ALLEN & COMPANY, P.C.

CERTIFIED PUBLIC ACCOUNTANTS

TIMOTHY F. ALLEN, CPA

400 WEST CUMMINGS PARK, SUITE 1150 • WOBURN, MA 01801

TEL. 617.489.9700 • FAX 617.489.0711 • Cell: 617-828-1846

E-MAIL: tim@tfallen.com

IMPORTANT AUDIENCE INFORMATION

SEATING OPTIONS - *If you didn't bring your own and don't want to sit on the ground, we offer the following seating options:*

- **Rent a Lawn Chair:** \$5 rental fee (+ a \$5 refundable deposit).
- **Reserve a Chair in the Friends Section:** Available for a \$75 donation made in advance online (commshakes.org) or over the phone (617-426-0863). A limited number of chairs may be available at select performances without a reservation. Visit the Information Tent to the left of the stage for availability and more information.
- **Buy a Commonwealth Shakespeare Company blanket:** Water resistant and great for taking on picnics and future Free Shakespeare on the Common performances. Available for \$35 at our Merchandise Tents on either side of the stage.

FOOD OPTIONS – *In addition to satisfying your snack cravings, a portion of each sale goes to support Free Shakespeare on the Common:*

- **Water and Candy:** Available for \$2. Sold by CSC Apprentices and volunteers circulating throughout the audience and at the tents on either side of the stage.
- **Ben & Jerry's:** Ice cream truck is located behind the Bandstand. Be sure to try our signature sundae, "My Kingdom for a Sundae!"
- **Food Trucks:** Trucks will be parked behind the Bandstand at the Friday, Saturday, and Sunday evening performances.

PARKING

Parking is available in the **Boston Common Garage**. Be sure to pick up a discount coupon from the Info Tent or from an usher to receive \$1 off your parking. These coupons are provided by the Massachusetts Convention Center Authority (MCCA). CSC receives a \$2 donation from the MCCA each time a coupon is used.

RESTROOMS

Portable toilets are located near the tennis courts.

THE GREENSHOW

CSC's Greenshow features actors from our Apprentice Program. Traditionally, a Greenshow is the prelude to an evening's performance, meant to prepare an audience for the main event. Our Greenshows are performed periodically before curtain right in the audience by our Apprentice Ambassadors. They are fun, lively, and appropriate for the whole family—a great way to learn more about *Richard III*! Feel free to ask our Ambassadors any questions you might have about the play, CSC, or Shakespeare!

MERCHANDISE

Hoodies, T-shirts, blankets, baseball hats, and other items are available for purchase at the CSC tents on either side of the stage. 100% of the proceeds go to benefit CSC.

SUPPORTING FREE SHAKESPEARE ON THE COMMON

CSC needs YOUR help to continue offering Free Shakespeare on the Common to Boston audiences for years to come. A suggested donation of \$20 or any amount that is meaningful to you is greatly appreciated.

- Give Online: Visit www.commshakes.org/ways-to-give
- Give In-Person: Leave a donation at any of the CSC tents before or after the performance.
- Apprentice Ambassadors will also collect donations just before showtime. To donate using a credit card, please check in with an Apprentice Ambassador carrying an iPad or visit the Info Tent.
- Give a gift at Venmo @commshakes

STAY CONNECTED TO CSC

- Like us on Facebook and follow us on Twitter and Instagram at @commshakes.
- Visit our newly designed website at www.commshakes.org to sign up for our e-newsletter, and to get more information about the show at commshakes.org/production/richard-iii/



NOW THRU AUGUST 5!

“EXACTLY WHAT
YOU **WISH** FOR!”

NBC-TV



Disney **Aladdin**

THE HIT BROADWAY MUSICAL

BOSTON OPERA HOUSE

866-870-2717 • BroadwayInBoston.com

Groups (10+) Save! 617-482-8616

LEXUS
**BROADWAY
IN BOSTON**
EST. 1984

A TRUE BABSON STORY

THE ENTREPRENEURS



P A M E L A A . P A N T O S

Behind every great performer is a great entrepreneur.

IF ALL THE WORLD'S A STAGE, THEN YOU'LL FIND ENTREPRENEURS LIKE PAMELA A. PANTOS MBA'06 FRONT AND CENTER. WITH A SUCCESSFUL CAREER AS A RENOWNED OPERA SINGER AS HER REAL-WORLD TRAINING, SHE ENROLLED AT BABSON TO LEARN HOW TO PARLAY HER PASSION FOR PERFORMANCE INTO A CAREER HELPING VENUES FIND THEIR NEXT GREAT LEADERS.

ACTION.BABSON.EDU